



# BLUETOOTH MARKETING DEVICE

## BT-Pusher STANDALONE

### USER GUIDE

Version 1.0.3



**DeviceGate Technology Co.,Ltd**

Web <http://www.BT-Pusher.com>

<http://www.BT-Pusher.com.cn>

Add Room 4032,HaoJing Building,NO.9 DaGangGongYe Road,  
TianHe , GuangZhou, GuangDong, China

Mail [Sales@BT-Pusher.com](mailto:Sales@BT-Pusher.com)

Tel 0086-20-82317785, 0086-20-82317786

Fax 0086-20-62201638

# Content

1	Introduction.....	3
1.1	Overview.....	3
1.2	Function.....	3
1.3	Application.....	4
1.4	Features.....	5
1.5	Package Contents.....	5
2	Installation.....	7
2.1	BT-Pusher STANDALONE Interface Specification.....	7
2.2	User Guide.....	8
2.2.1	Power.....	8
2.2.2	FLASH DISK Local Management.....	10
2.3	Installation Notes.....	13
3	Warranty Information .....	13

# 1. Introduction

## 1.1 Overview



BT-Pusher BlueTooth Advertising System is a new generational advertisement and information transmitting marketing system, which is developed by DeviceGate Technology Co., Ltd. BT-Pusher Bluetooth Advertising System can send promotional and advertising messages, business cards, event notifications to the mobile phones and all other Bluetooth-enabled devices automatically. You can provide your customers with news, special offers, flyers, discount coupons, multimedia files, java games and other types of media. If end users allow receiving the message, any kind of media format can be sent to their devices.

## 1.2 Function

- Auto search for Bluetooth devices
- Support for a variety of Bluetooth message transmission strategy
- Support Adjustable bluetooth Coverage range by software settings

- Blacklist function
- A variety of refuse retransmission mechanism
- Auto pair with mobile bluetooth devices(mainstream mobile models)
- Show the system working status using LED
- Delivery of a wide range of information type: txt,gif,jpg,mp3,mp4,3gp,java games and so on
- Support up to 21 Bluetooth devices at the same time to download
- Send bluetooth message at scheduled times
- File update at scheduled times
- The fastest download speeds of up to 150KByte / S , decided to Bluetooth version of mobile and receive environmental
- Transmission distance: up to 100 meters
- Support for different time periods to send different content
- The same user will get each message only ONCE , no matter what version you're using
- System can automatically record connection and receive detailed information of all users for you to decision-makin
- Support USB Local Management


## 1.3 Application

- Shops and In-store Promotions
- Restaurants and coffee shops
- Tourist areas
- Airports
- Exhibitions
- Business center / shopping mall
- Hotels
- Sport events

- Transportation
- Auto 4S shops
- Motor City
- Housing Sales Center
- Auto parts sales shop
- Repair stations
- Cinemas
- Recreation centers

**Even you can think of any place, almost everywhere**

## 1.4 Features

Model	<a href="#">BT-Pusher STANDALONE</a>
Appearance	
Status indication	LED status indication
Size	10cm(W) * 14cm(L) * 3cm(H)
Weight	300g
Power Input	110-240V (Battery optional)
Storage	Above 128M Byte, expanded to 1G Byte
Bluetooth type	ClassII or Class I
Simultaneous Connections	21
USB Interface	Yes
Ethernet	NO
WIFI	NO
GPRS	NO
Abnormal automatic recovery function	NO
Management method	USB LOCAL

## 1.5 Package Contents

Each [BT-Pusher STANDALONE](#) include:

- 1, A [BT-Pusher STANDALONE](#) device



- 2, A adapter(Appearance for reference only)



#### Optional Accessories:

- 1, 4800mAH Li-ion battery(Appearance for reference only)



## 2. Installation

### 2.1 BT-Pusher STANDALONE interface specification



- **LED:** Indicate the working status of the [BT-Pusher STANDALONE](#) device
- **POWER INPUT:** DC 12V 1A power adapter
- **USB INTERFACE:** Used to connect flash disk for offline management. Please use **BtspConfig** software to modify corresponding parameters or update file contents and make sure to save the results to a flash disk, then insert the flash disk into the relevant BT-Pusher Device's USB interface, the system will automatically set the device parameters, update file contents and download log file, modify blacklist and so on. (After you insert a flash disk, please make sure LED show a status described in section 2.2.2)

## 2.2 User Guide

### 2.2.1 Power

1. Put [bt-pusher](#) device in a secure place, and Plug power adapter (DC 12V)

in the power interface,As shown below:



2. You can also use lithium battery-powered, as shown below:



3. After power-on, LED will indicate the system status information, as follows

- (1) Red light. Indicates power supply normal



- (2) Red light, blue light flashes once every second. [BT-Pusher](#) device started to enter the normal work state, it will scan surrounding Bluetooth-enabled

devices, and send relevant information to them.



Then you will receive the [BT-Pusher](#) device's default information, if you want to change what is being sent, please use **BtspConfig** or **BTManagerServer** software changes. (Please make sure your Bluetooth-enabled cell phone turned on , and Bluetooth visibility function keep alive. NOKIA mobile phone (Figure 1), SAMSUNG mobile phone (Figure 2) as an example)

Figure 1

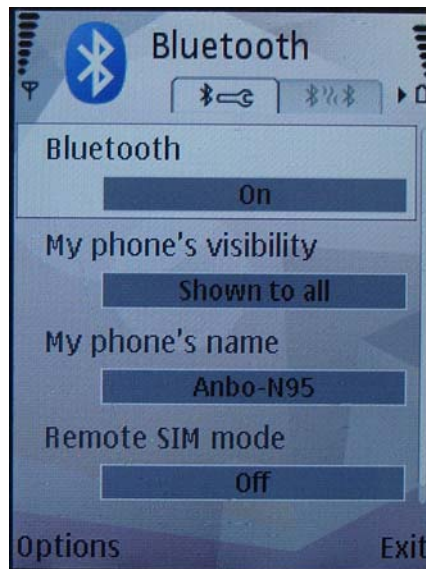
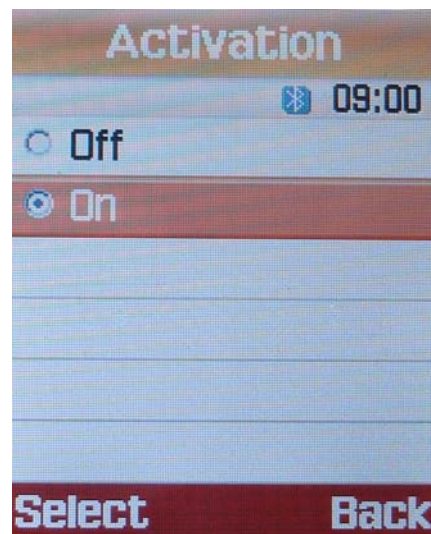


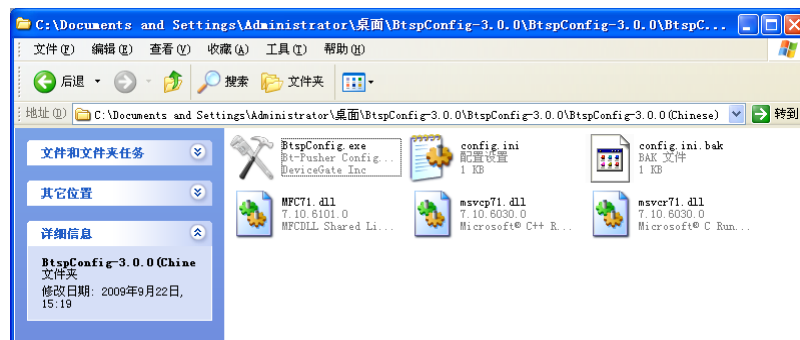
Figure 2



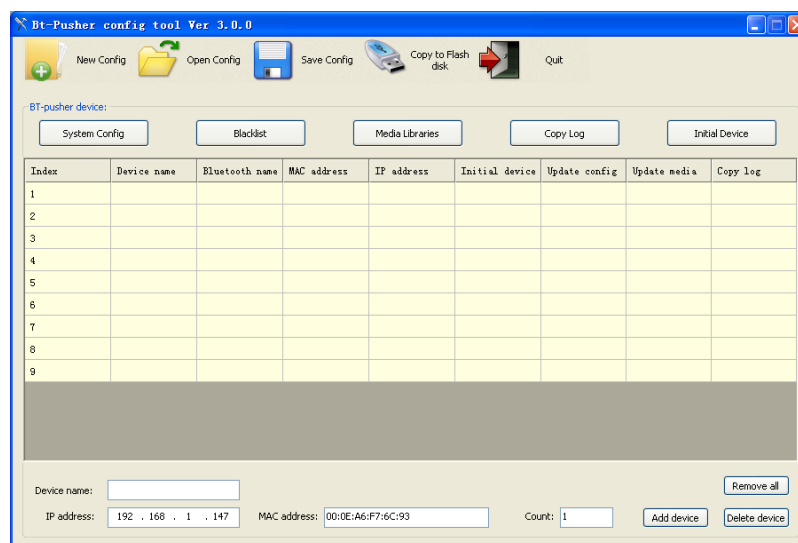
## 2.2.2 FLASH DISK Local Management

[BT-Pusher](#) device with flash disk local management functions, through flash disk operation can update the system configuration information, modify the file content, blacklist and download log file and so on.

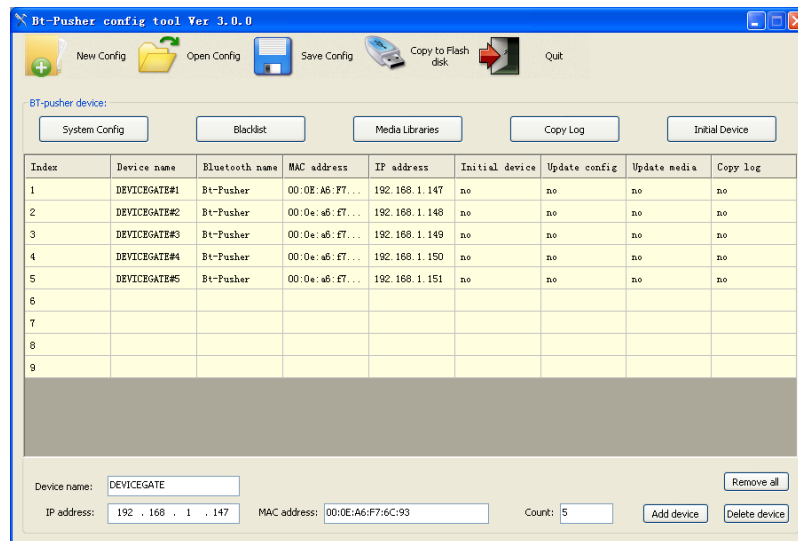
- 1: Need to use the **BtspConfig** configuration software for the relevant operation. **BtspConfig** software on **BtspConfig** directory:



- (1) Double-click to open **BtspConfig.exe** software, will appear below the window, first click on the “new config” to build a new project, and then according to your own needs to special configuration your project.



- (2) Second, fill in the number of devices you need to configure and network device name, as shown below:



Please refer to document “BtspConfig software User Guide” for more detailed operation

- 2: Use **BtspConfig** software to modify corresponding parameters or update file contents and make sure to save the results to a flash disk, then insert the flash disk into the relevant BT-Pusher Device's USB interface, the system will automatically set the device parameters, update file contents and download log file, modify blacklist and so on. as shown below



- (1) Flash disk inserted, [BT-Pusher](#) device's green light flashes once every half a second, as shown below, indicates device being updated:



- (2) When the green led stop flashing, blue led will continue to flash, indicating update has been completed, the system re-enter the normal working state, only this time you can unplug the Flash disk.



## 2.3 Installation Notes

1. Away from the high-temperature place.
2. To avoid direct sunlight.
3. Do not put damp places, to avoid the water.
4. Do not place other equipment above [BT-Pusher](#) device.
5. [Bt-Pusher](#) device should be installed in a well-ventilated place.

## **3 Warranty Information**

DeviceGate guarantees BT-Pusher products are free of defects for a period of 12 months from the date of purchase. This warranty is non-transferable and applies to the original purchaser. BT-Pusher products found to be defective will be replaced free of charge. Purchaser is responsible for all shipping costs. For returns and warranty claims, Purchaser must first obtain a return authorization number by sending an email to [BT-Pusher@devicegate.com](mailto:BT-Pusher@devicegate.com). Returns or Warranty claims without a return authorization number will not be accepted.

**Thank you for choosing BT-Pusher device!**

**Please visit our website**

**<http://www.BT-Pusher.com>**

**For more detailed**