

## How to Connect BT-Pusher Device to BTManagerServer Software using GPRS For Management Remotely

1: Use **BtspConfig** software to setup correct network parameter for BT-Pusher Device.

- 1) Click on "New Config" button, the following window popup.
- 2) Enter Config name to create new Project.
- 3) Click OK to return to main window. (shown in Illustration 1)

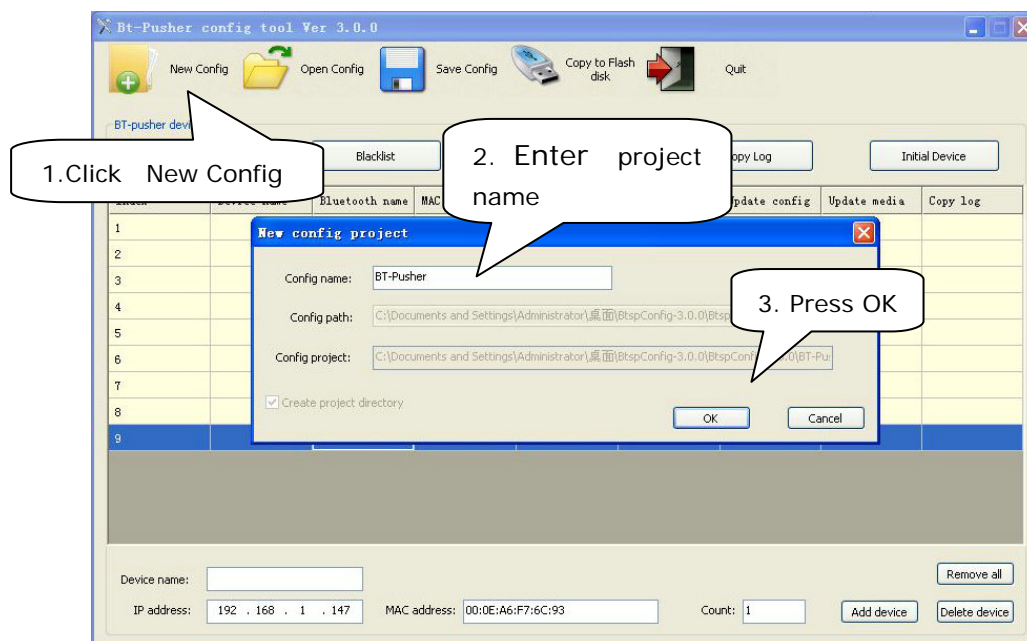


Illustration 1

- 4) Enter "Device name" in the below blank sheet
- 5) Enter the count of BT-Pusher devices you want to operate in the system
- 6) Enter correct IP address range.
- 7) Click "Add Device". (shown in Illustration 2)

8) You will see a List of all devices

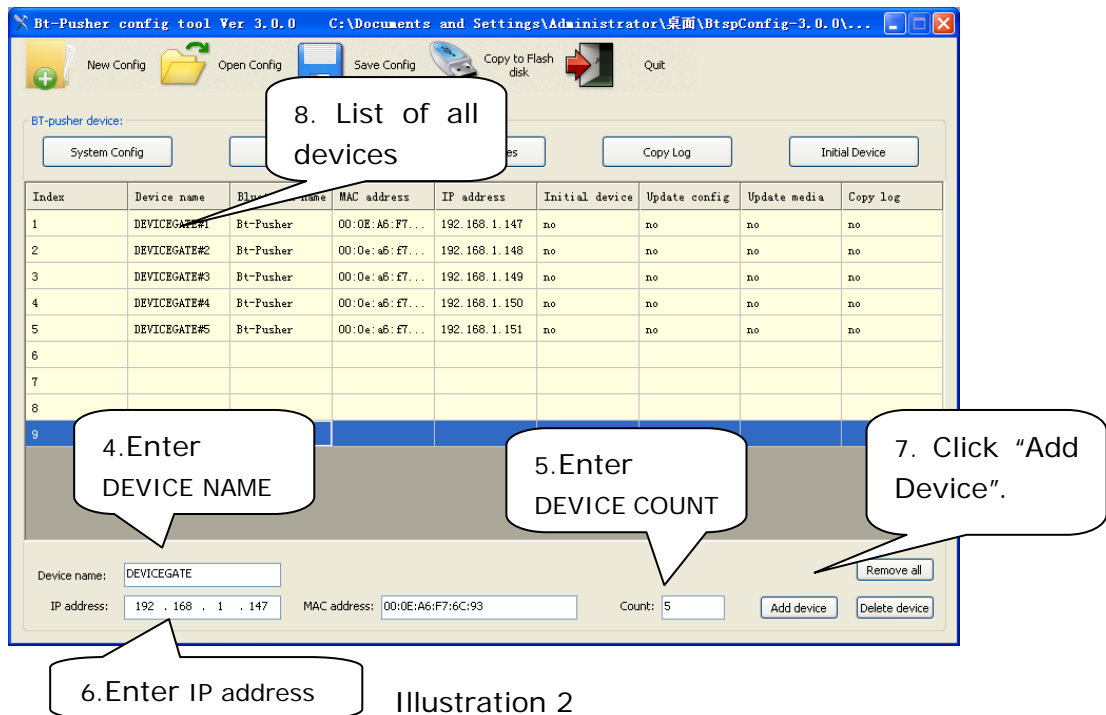
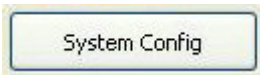


Illustration 2

And network version BT-Pusher device requires some other Network parameters setup.



- 1) Clicking System Config button .
- 2) Under Network Type, select "GPRS" option.
- 3) Then Enter NetPoint and Telephone. **Telephone** and **Netpoint** are entered according to different countries where **BT-Pusher** is used.  
(Type "CMNET" in **Netpoint** editbox and "\*99\*\*\*1#" in **Telephone** editbox in China)
- 4) You need write your Server IP here, It is a internet IP address. Please ask your Network administrator for more detailed.
- 5) Click "OK" then system config updated information will be saved

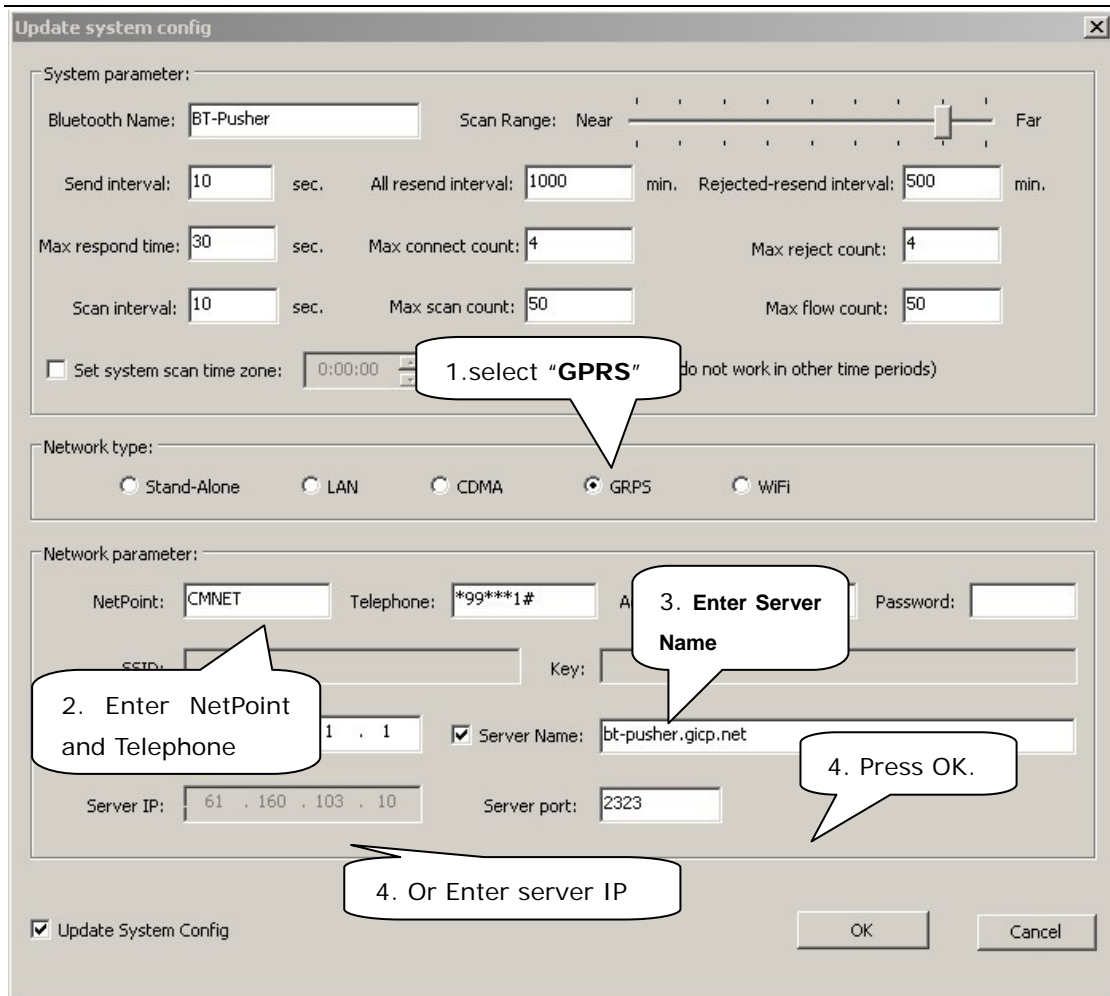


Illustration 3

- 6) Back to main window, you can see "Update Config" were selected
- 7) If everything has been confirmed correct, Press **Save Config** on the upper right corner.
- 8) Click "OK" in the pop-ups window of the "Save config done!"
- 9) Insert a USB device to the USB Port of your PC, then press **Copy to Flash disk.**
- 10) Select U-Disk you want to copy to in the pop-ups window, then click "OK"

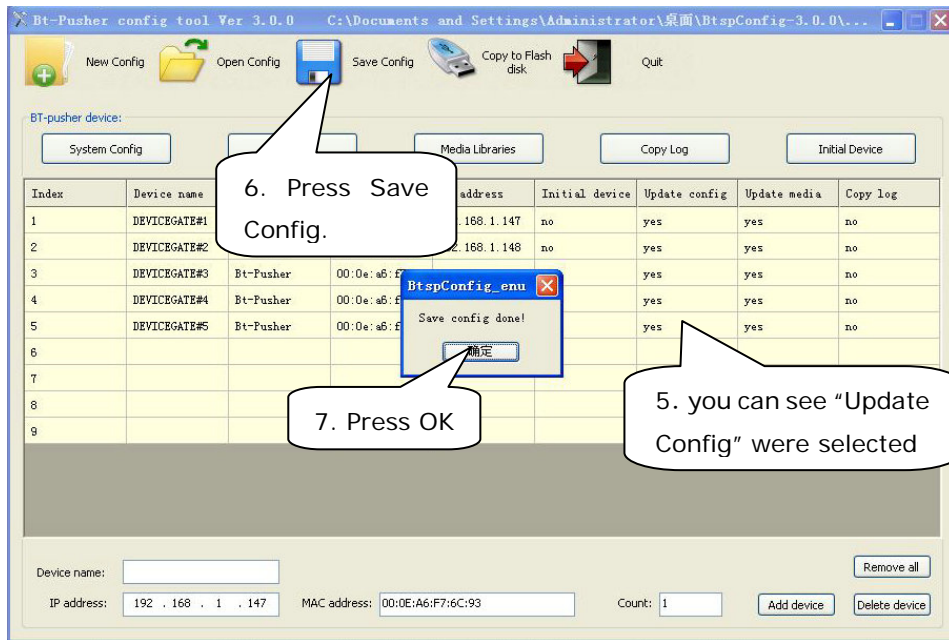


Illustration 4

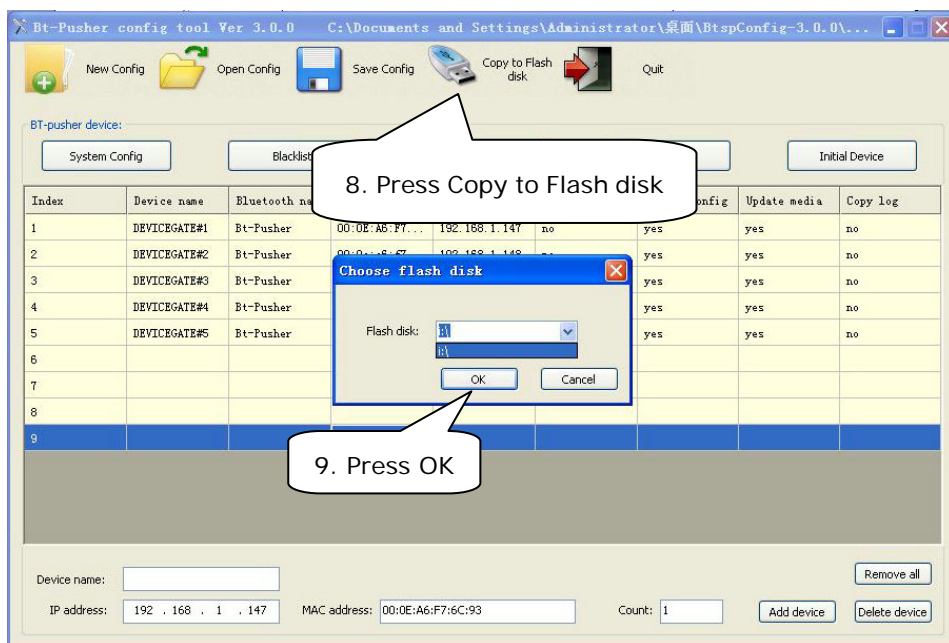


Illustration 5

11) If there is an old update file stored in this U-disk, you will see a dialog in Illustration 6 asking whether you would like to overwrite it.



Illustration 6

12) Press **OK** to Continue.

13) A dialog will appear saying "**Copy to flash disk done!**"

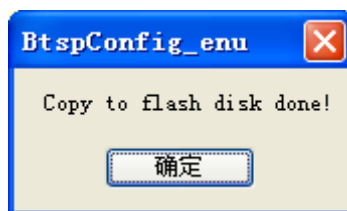


Illustration 7

14) You can now remove the USB from your PC and insert it to the

**BT-Pusher** USB port.

15) [BT-Pusher](#) device's Green light flashes once every half a second, indicates device being updated:

- 2: Connect BT-Pusher Device to **BtManagerServer** software
  - 1) Please connect your GPRS MODEM to BT-Pusher Device USB port.
  - 2) Plug power adapter (DC 12V) in the power interface.
  - 4) Double-click to open **BtManagerServer.exe** software, and soon there is a device icon into a Green.

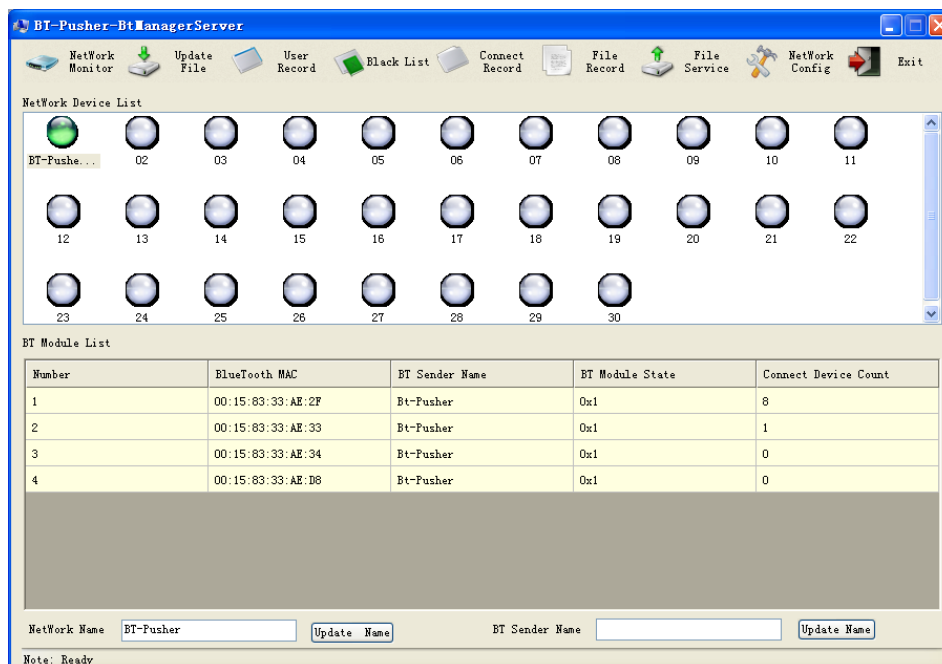


Illustration 11



**DeviceGate Technology Co.,Ltd**

Web <http://www.BT-Pusher.com>

Mail [BT-Pusher@devicegate.com](mailto:BT-Pusher@devicegate.com)

Tel 0086-20-82317785, 0086-20-82317786

Fax 0086-20-62201638