
How to Remote Control the BT-Pusher Device via Wi-Fi Dongle



DeviceGate Technology Co.,Ltd

Web <http://www.BT-Pusher.com>; <http://devicegate.en.alibaba.com>

Add Room 4032, HaoJing Building, No.9 DaGangGongYe Road,
TianHe, GuangZhou, GuangDong, China.

Mail BT-Pusher@devicegate.com

Tel +86(20)82317785; +86(20)82317786

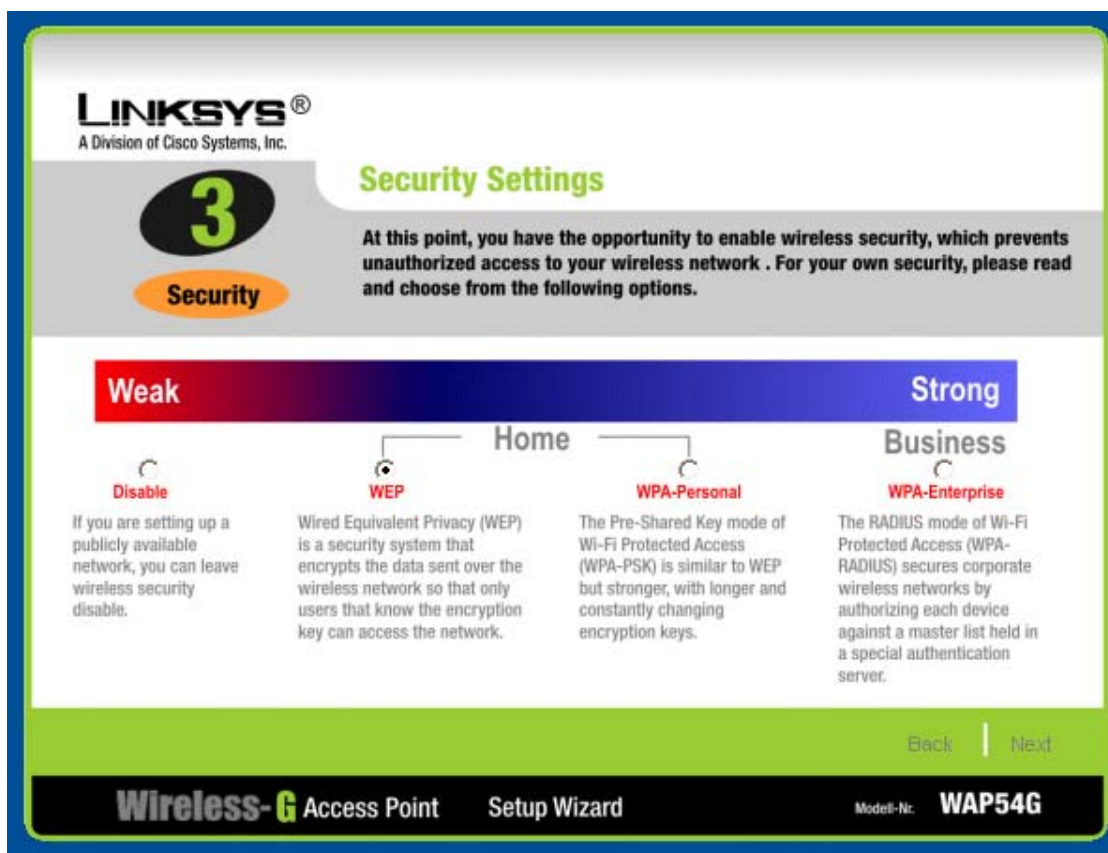
Fax. +86(20)62201638.

Method One: Security Setting

One: Wireless Access Point Setting

If you want use security setting. You have to select **WEP (128-bit)** Method. Any other security setting as WPA is not supported at present.

Now we take Linksys WAP54G Access Point as a example:



Please make sure to select **WEP(128-bit)** security method

Security WEP (128-Bit) Please choose WEP (64-Bit), WEP (128-Bit), WPA Personal, WPA2 Personal, WPA2 Mixed Mode or Disable.

Passphrase Type the Passphrase that will be used to generate the WEP key. The Passphrase is case-sensitive and should not be longer than 16 characters.

Key 1 1234567890abcd If you choose the Passphrase option for WEP, a WEP key will generate automatically. To manually enter a WEP key, select a WEP algorithm and leave the Passphrase option

Two: Use BTSPConfig Software to Configure BT-Pusher Device

Use **BtspConfig** software to setup correct network parameter for BT-Pusher Device.

1. Click on "New Config" Button, The following window popup.
2. Enter Config name to create new project.
3. Click OK to return to main window. (shown in Illustration 1)

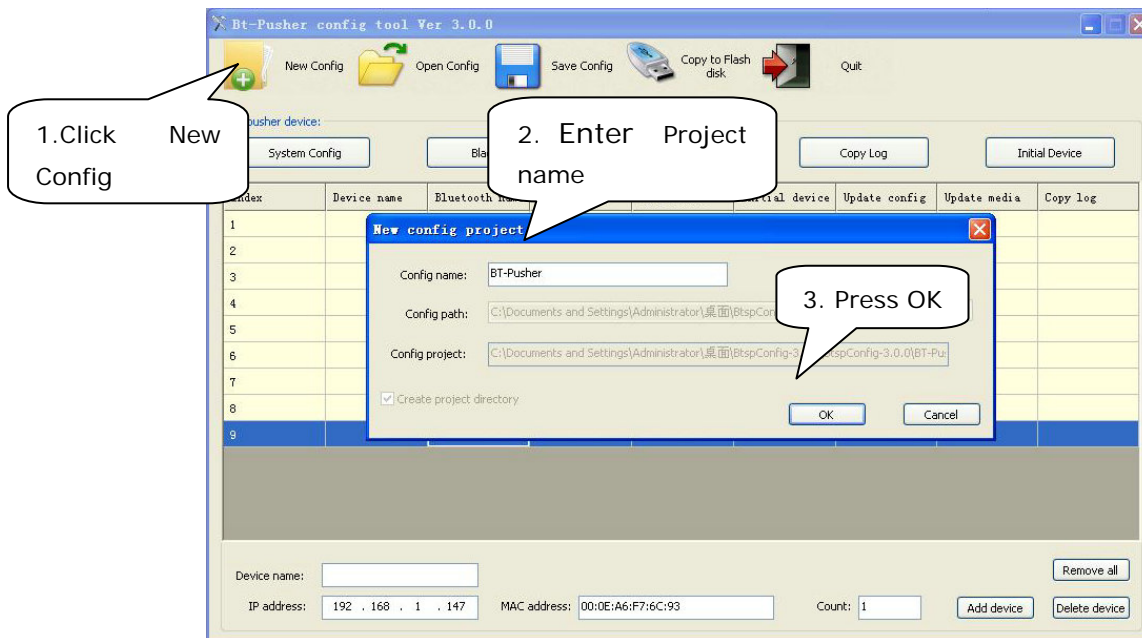


Illustration 1

4. Enter "Device name" in the below blank sheet

5. Enter the count of BT-Pusher devices you want to operate in the system
6. Enter correct IP address range, This is important for you to connect BtmanagerServer software. IP address and Server IP must be at same network segment in LAN, if you want to connect to internet, You need write correct gateway IP Address in System Config window, and server ip must be a Internet ip address.
7. Click "Add Device". (shown in Illustration 2)
8. You will see a list of all devices

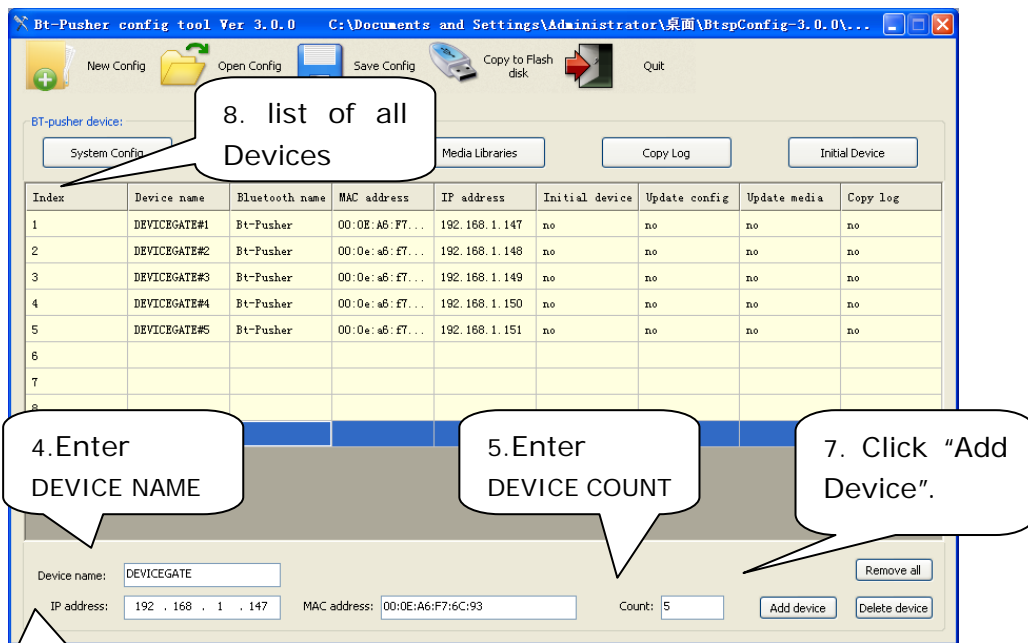
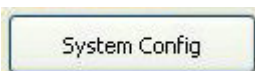


Illustration 2

7, Enter Ip Address. IP address and server IP in the same network segment in WIFI

And network version BT-Pusher device requires some other Network parameters setup.



1. Clicking System Config button .
2. Under Network Type, Select WIFI option.



3. Enter **SSID** and **KEY**, **Please make sure to keep same SSID and KEY as step ONE setting.**
4. Then Enter Server IP and Gateway IP. This is very important for BT-Pusher Device to connect to BTManagerServer software. If you use WIFI, IP address and Server IP address must be at same network segment (Server IP Address is your PC IP address with BTManagerServer software installation), please refer to Illustration 3 (LAN). If you want to connect to internet, You need write your Gateway IP here, and Server IP address is a internet IP address, or you can enter SERVER Name directly. Please ask your Network administrator for more detailed.
5. Click "OK" then system config updated information will be saved

The screenshot shows the 'Update system config' dialog box with the following fields and callouts:

- System parameter:**
 - Bluetooth Name: BT-Pusher
 - Scan Range: Near (slider)
 - Send interval: 10 sec.
 - All resend interval: 1000 min.
 - Rejected-resend interval: 500 min.
 - Max respond time: 30 sec.
 - Max connect count: 4
 - Max reject count: 4
 - Scan interval: 10 sec.
 - Max scan count: 50
 - Max flow count: 50
 - Set system scan time zone: 0:00:00 To 23:59:59 (Devices do not)
- Network type:**
 - Stand Alone
 - LAN
 - CDMA
 - GRPS
 - WIFI (selected)
- Network parameter:**
 - NetPoint: [] Telephone: [] Account: [] Password: []
 - SSID: DEVICEGATE Key: 1234567890abcdef1234567890
 - Gateway IP: 192 . 168 . 1 . 1 Server Name: []
 - Server IP: 192 . 168 . 1 . 107 Server port: 2323
- Update System Config
- OK Cancel

Callouts:

1. select "WIFI"
2. Enter SSID and KEY
3. Enter Gateway and server IP
4. Press OK.

Illustration 3 (LAN)

Or

Update system config

System parameter:

Bluetooth Name: Scan Range: Near Far

Send interval: sec. All resend interval: min. Rejected-resend interval: min.

Max respond time: sec. Max connect count: Max reject count:

Scan interval: sec. Max scan count: Max flow count:

Set system scan time zone: To (Devices do not work in other time periods)

Network type:

Stand-Alone LAN CDMA GRPS WiFi

Network parameter:

NetPoint: Telephone: Account: Password:

SSID: Key:

Gateway IP: Server Name:

Server IP: Server port:

Update System Config

- 6) Back to main window, you can see "Update Config" were selected
- 7) If everything has been confirmed correct, press **Save Config** on the upper right corner.
- 8) Click "OK" in the pop-ups window of the "Save config done!"
- 9) Insert a USB flash disk device to the USB Port of your PC, then press **Copy to Flash disk**.
- 10) Select which flash disk you want to copy to in the pop-ups window, then click "OK"

BT-Pusher

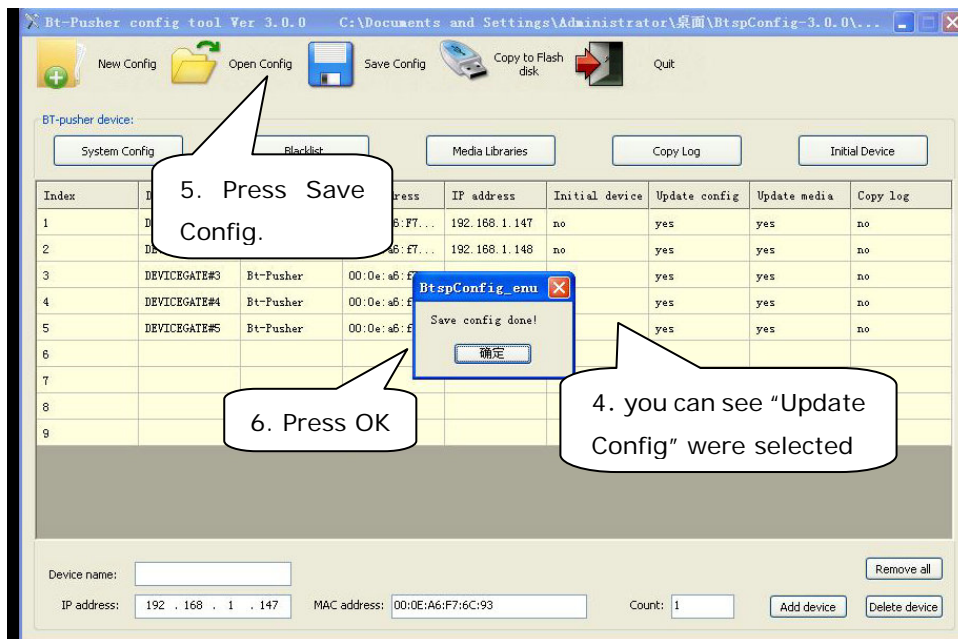


Illustration 4

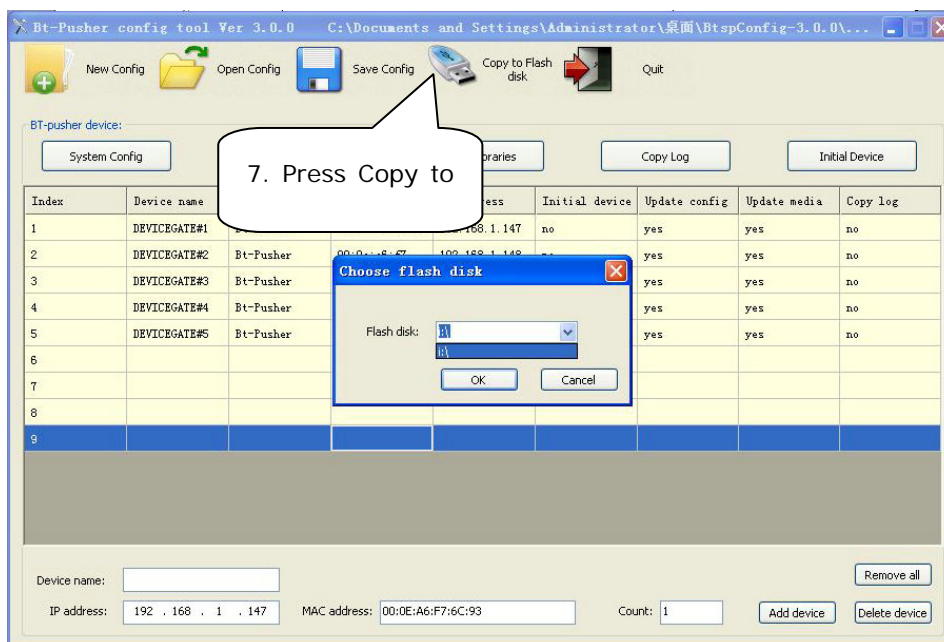


Illustration 5

11) If there is an old update file stored in this Flash disk, you will see a dialog in

Illustration 6 asking whether you would like to overwrite it.



Illustration 6

12) Press **OK** to Continue.

13) A dialog will appear saying "**Copy to flash disk done!**"



Illustration 7

14) Then please safely remove the flash disk from your PC.

Three: BT-Pusher Device Operation

(1) Please insert Flash disk to USB interface of BT-Pusher, then [BT-Pusher](#) device's top green light flashes once every half a second, as shown below, indicates device being updated:

BT-Pusher[®]



(2) When the top green LED stop flashing, The middle Green LED will continue to flash, indicating update has been completed, the system re-enter the normal working state, only this time you can unplug the Flash disk



(3) POWER OFF BT-Pusher device, Insert WiFi dongle into USB interface of BT-Pusher.

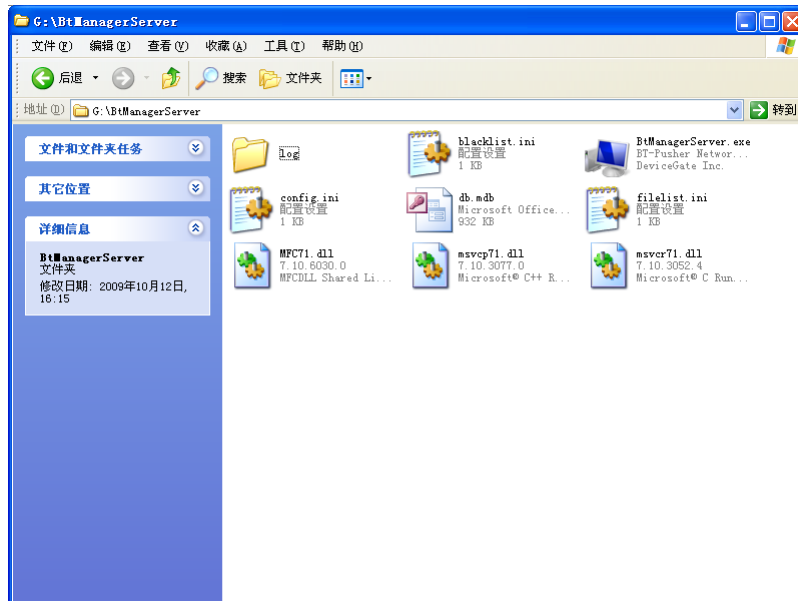


(4) POWER ON BT-Pusher again.

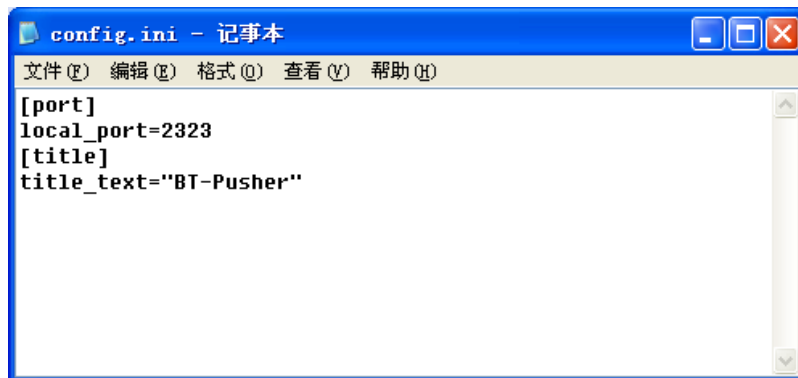
Four: BTManagerServer software operation

1. Entry **BTManagerServer** directory,as shown below:

BT-Pusher

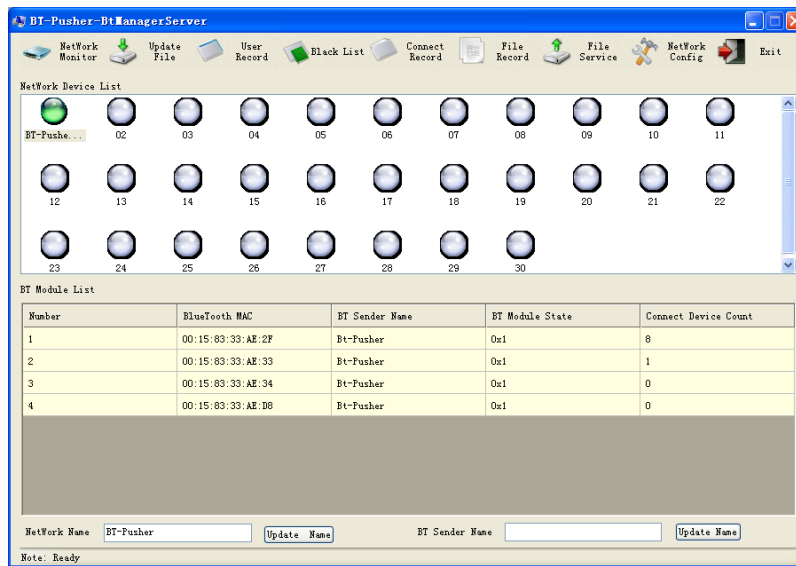


2. Double-click to open config file, make sure the server port local_port with **BtspConfig** software settings are same , as shown below.:



3. Double-click to open **BtManagerServer** software, and soon there is a device icon into a green, indicates [BT-Pusher](#) device is connected with **BtManagerServer** software, this time you can use **BtManagerserver** software to operate BT-Pusher device real-time. As shown below:

BT-Pusher



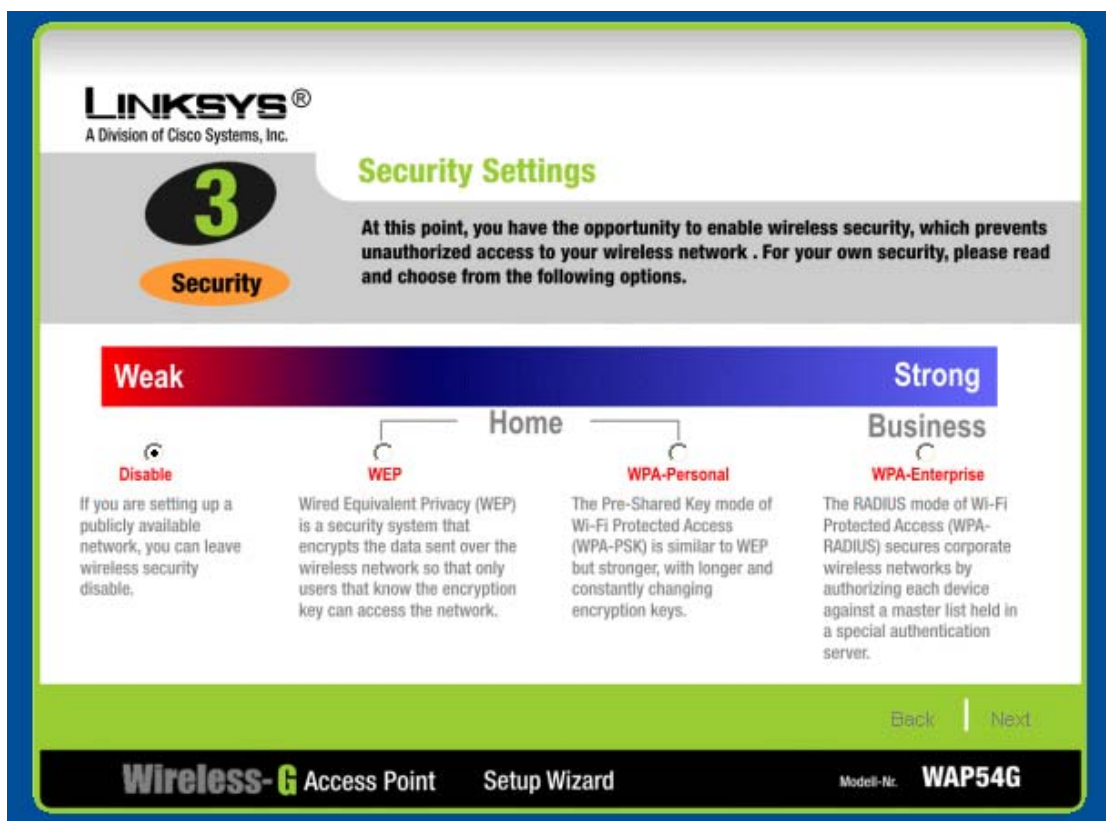
Please refer to “BTManagerServer Software User Guide.pdf” for more detailed operation

Method Two: No Security Setting

One: Wireless Access Point Setting

If you want use no security setting. You have to select to disable security setting .

Now we take Linksys WAP54G Access Point as a example:



Two: Use BTSPConfig Software to Configure BT-Pusher Device

Use **BtspConfig** software to setup correct network parameter for BT-Pusher Device.

- 1) Click on "New Config" Button, The following window popup.

- 2) Enter Config name to create new project.
- 3) Click OK to return to main window. (shown in Illustration 1)

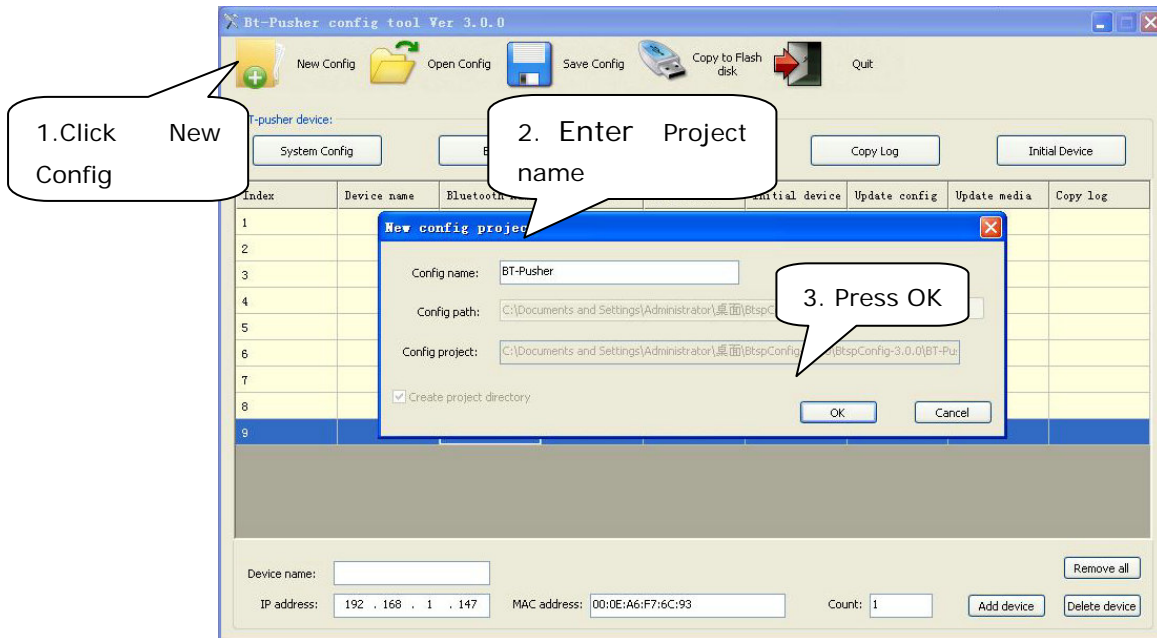


Illustration 1

- 4) Enter "Device name" in the below blank sheet
- 5) Enter the count of BT-Pusher devices you want to operate in the system
- 6) **Enter correct IP address range, This is important for you to connect BtmanagerServer software. IP address and Server IP must be at the same network segment in LAN, if you want to connect to internet, you need to write the correct gateway IP address in the System Config window, and server IP must be an Internet IP address.**
- 7) Click "Add Device". (shown in Illustration 2)
- 8) You will see a list of all devices

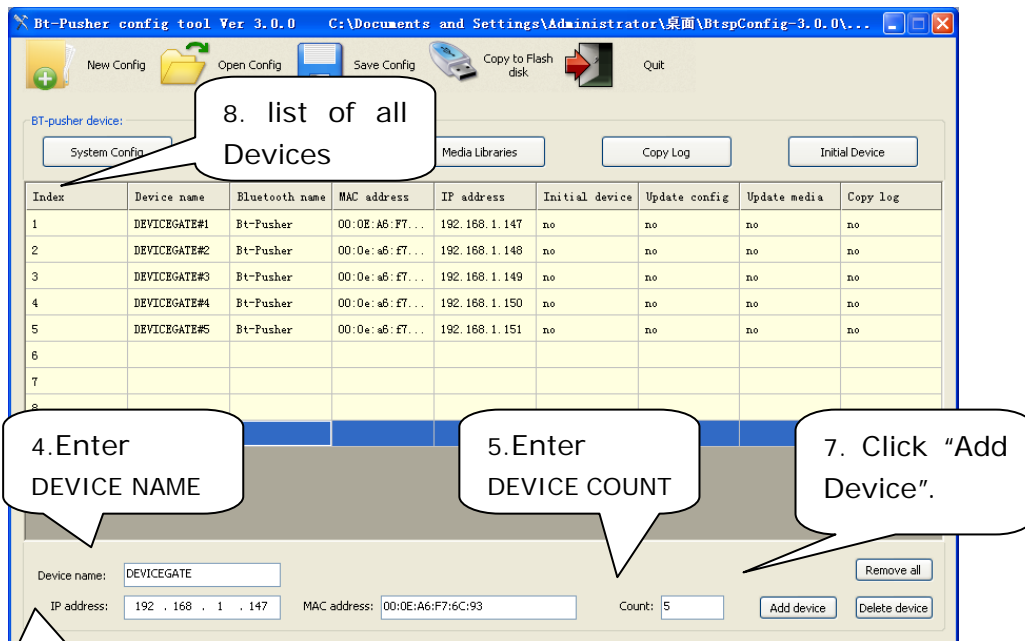
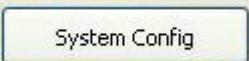


Illustration 2

7, Enter Ip Address. IP address and server IP in the same network segment in WIFI

And network version BT-Pusher device requires some other Network parameters setup.

- 1) Clicking System Config  button .
- 2) Under Network Type, Select WIFI option.
- 3) Enter **SSID** and **KEY**, If you select no security setting, you only need write SSID, and left **KEY** as blank.(this is very important) . as below:

Network type:

Stand-Alone
 LAN
 CDMA
 GRPS
 WIFI

Network parameter:

NetPoint: Telephone: Account: Password:

SSID: Key:

Then Enter Server IP and Gateway IP. This is very important for BT-Pusher Device to connect to BTManagerServer software. If you use WIFI, IP address and Server IP address must be at same network segment (Server IP Address is your PC IP address with BTManagerServer software installation). If you want to connect to internet, You need write your Gateway IP here, and Server IP address is a internet IP address, or you can enter SERVER Name directly. Please ask your Network administrator for more detailed.

4) Click "OK" then system config updated information will be saved

The screenshot shows the 'Update system config' dialog box with the following fields and callouts:

- System parameter:**
 - Bluetooth Name: BT-Pusher
 - Scan Range: Near (slider)
 - Send interval: 10 sec.
 - All resend interval: 1000 min.
 - Rejected-resend interval: 500 min.
 - Max respond time: 30 sec.
 - Max connect count: 4
 - Max reject count: 4
 - Scan interval: 10 sec.
 - Max scan count: 50
 - Max flow count: 50
 - Set system scan time zone: 0:00:00 To 23:59:59 (Devices do not)
- Network type:**
 - Stand Alone
 - LAN
 - CDMA
 - GRPS
 - WIFI
- Network parameter:**
 - NetPoint: [] Telephone: [] Account: [] Password: []
 - SSID: DEVICEGATE Key: 1234567890abcdef1234567890
 - Gateway IP: 192 . 168 . 1 . 1 Server Name: []
 - Server IP: 192 . 168 . 1 . 107 Server port: 2323
- Update System Config
- Buttons: OK, Cancel

Callouts:

1. select "WIFI"
2. Enter SSID and KEY
3. Enter Gateway and server IP
4. Press OK.

Illustration 3 (LAN)

Or

Update system config

System parameter:

Bluetooth Name: BT-Pusher Scan Range: Near Far

Send interval: 10 sec. All resend interval: 1000 min. Rejected-resend interval: 500 min.

Max respond time: 30 sec. Max connect count: 4 Max reject count: 4

Scan interval: 10 sec. Max scan count: 50 Max flow count: 50

Set system scan time zone: 0:00:00 To 23:59:59 (Devices do not work in other time periods)

Network type:

Stand-Alone LAN CDMA GRPS WiFi

Network parameter:

NetPoint: Telephone: Account: Password:

SSID: DEVICEGATE Key: 1234567890abcdef1234567890

Gateway IP: 192 . 168 . 1 . 1 Server Name: bt-pusher.gicp.net

Server IP: 202 . 96 . 127 . 46 Server port: 2323

Update System Config OK Cancel

- 5) Back to main window, you can see “Update Config” were selected
- 6) If everything has been confirmed correct, press **Save Config** on the upper right corner.
- 7) Click “OK” in the pop-ups window of the “Save config done!”
- 8) Insert a USB flash disk device to the USB Port of your PC, then press **Copy to Flash disk**.

9) Select which flash disk you want to copy to in the pop-ups window, then click “OK”

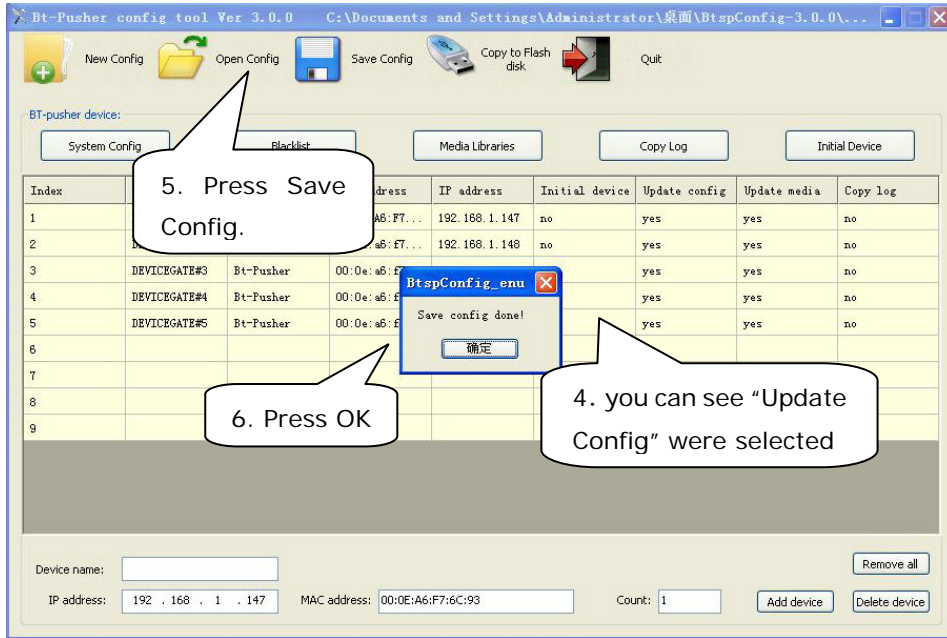


Illustration 4

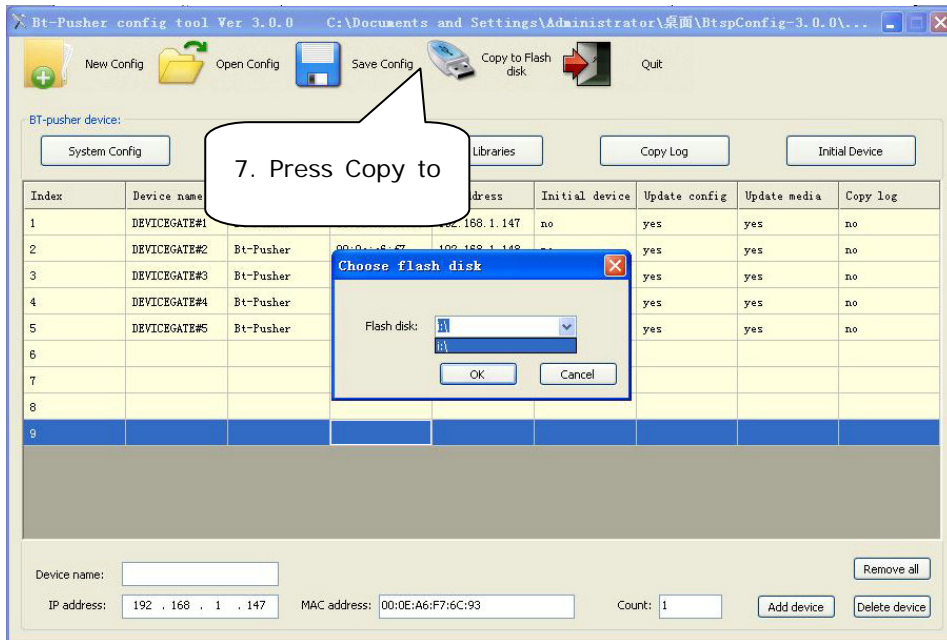


Illustration 5

10) If there is an old update file stored in this Flash disk, you will see a dialog in Illustration 6

asking whether you would like to overwrite it.



Illustration 6

11) Press **OK** to Continue.

12) A dialog will appear saying "**Copy to flash disk done!**"



Illustration 7

13) Then please safty remove the flash disk from your PC.

Three: BT-Pusher Device Operation

- 1) Please insert Flash disk to USB interface of BT-Pusher, then [BT-Pusher](#) device's top green light flashes once every half a second, as shown below, indicates device being updated:

BT-Pusher[®]



- 2) When the top green LED stop flashing, The middle Green LED will continue to flash, indicating update has been completed, the system re-enter the normal working state, only this time you can unplug the Flash disk



- (3)** POWER OFF BT-Pusher device, Insert WiFi dongle into USB interface of BT-Pusher.

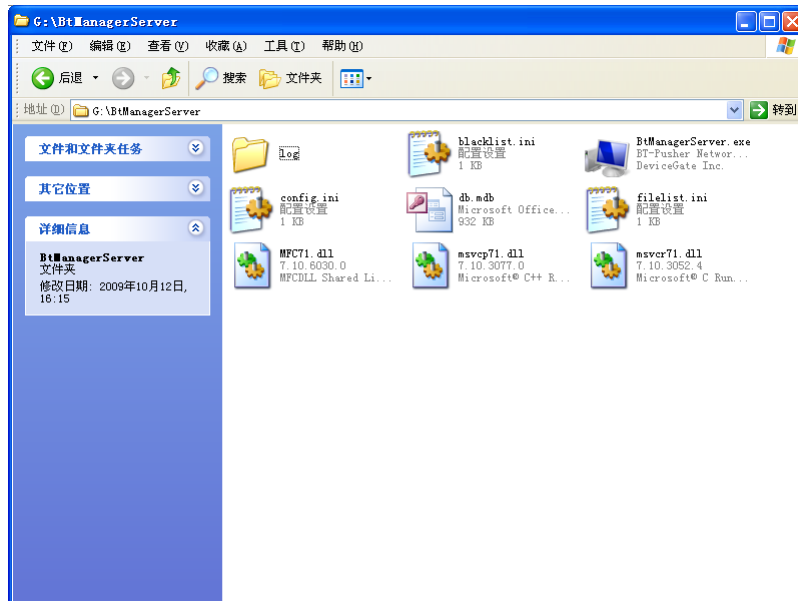


(4) POWER ON BT-Pusher again.

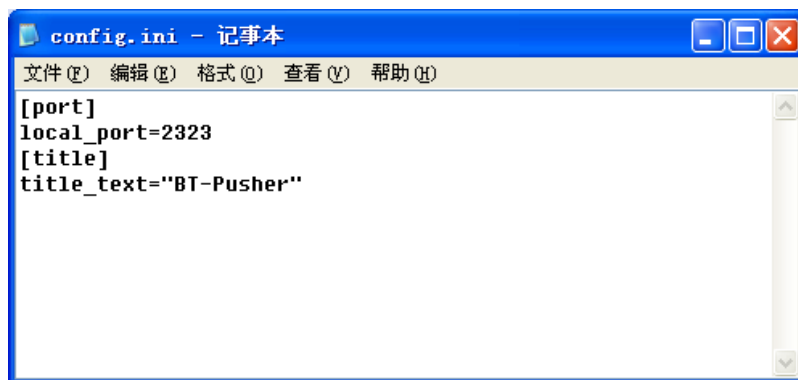
Four: BTManagerServer software operation

1) Entry **BTManagerServer** directory, as shown below:

BT-Pusher

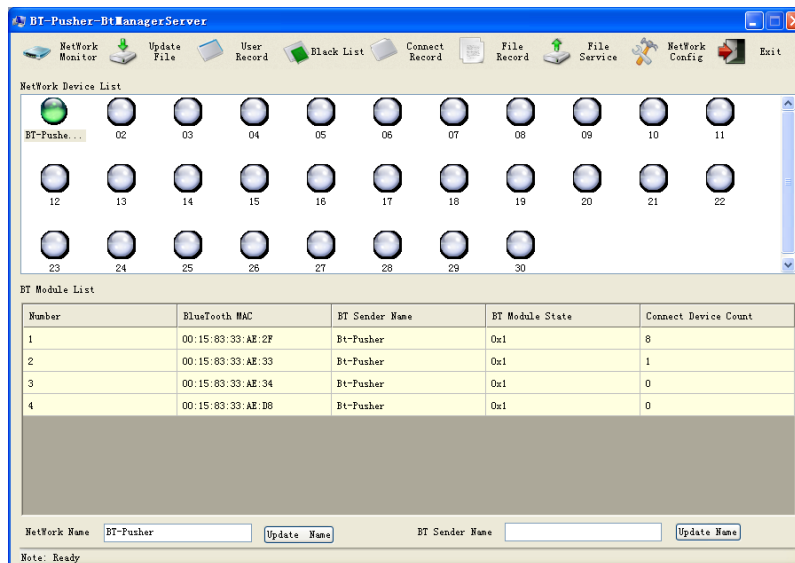


- 2) Double-click to open config file, make sure the server port local_port with **BtspConfig** software settings are same , as shown below::



- 3) Double-click to open **BtManagerServer** software, and soon there is a device icon into a green, indicates [BT-Pusher](#) device is connected with **BtManagerServer** software, this time you can use **BtManagerserver** software to operate BT-Pusher device real-time. As shown below:

BT-Pusher



Please refer to “BTManagerServer Software User Guide.pdf” for more detailed operation

Thanks for you to select BT-Pusher Product!