

## How to Connect BT-Pusher Device to BTManagerServer Software for Management Remotely

1: Use **BTSPConfig** software to setup correct network parameter for BT-Pusher Device.

- 1) Click on "New Config" button, the following window popup.
- 2) Enter Config name to create new project.
- 3) Click OK to return to main window. (shown in Illustration 1)

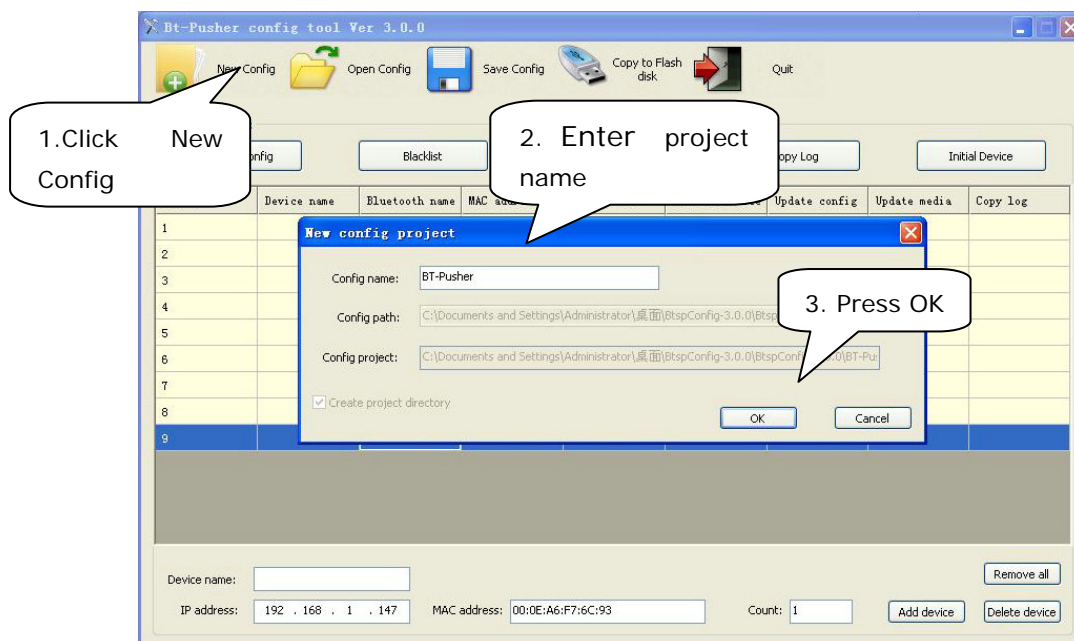


Illustration 1

- 4) Enter "Device name" in the below blank sheet
- 5) Enter the count of BT-Pusher devices you want to operate in the system
- 6) **Enter correct IP address range, This is important for you to connect BtmanagerServer software. Ip address and Server IP**

must be at same network segment in LAN, if you want to connect to internet, You need write correct gateway IP Address in System Config window, And Server IP is a internet IP address.

- 7) Click "Add Device". (shown in Illustration 2)
- 8) You will see a list of all devices

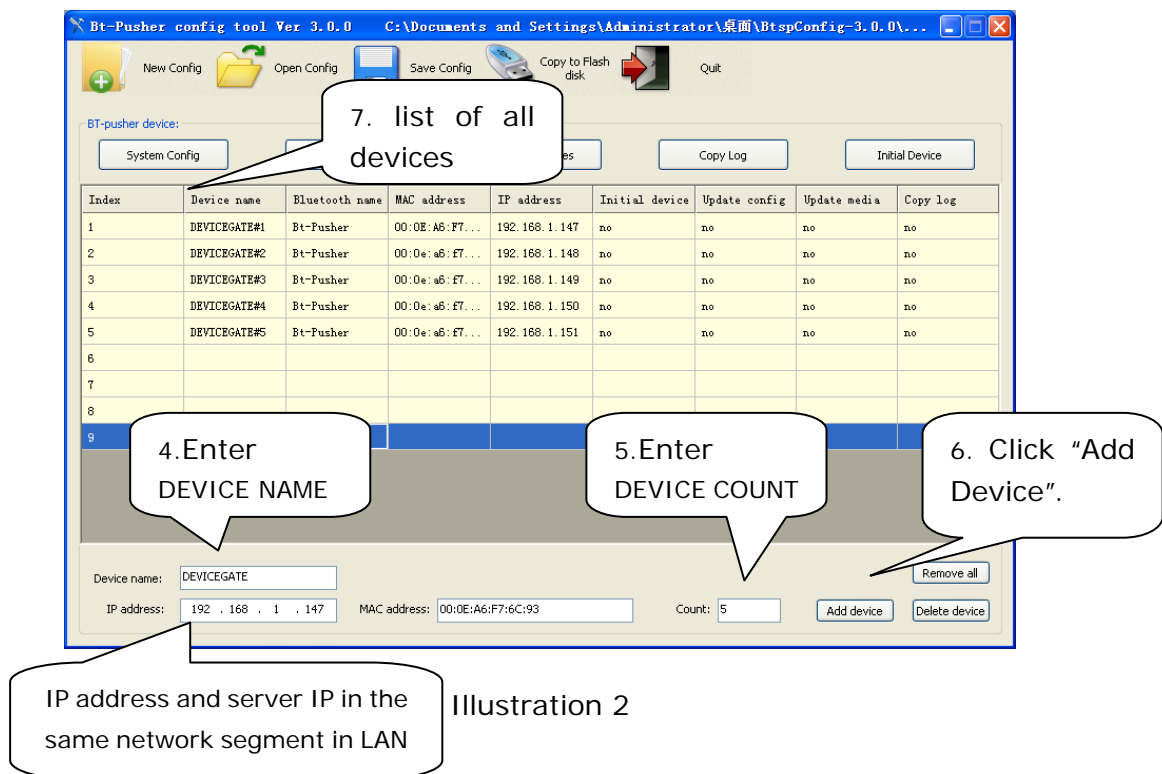
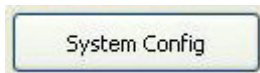


Illustration 2

And network version BT-Pusher device requires some other Network parameters setup.



- 1) Clicking **System Config** button .Under **Network Type**, select **LAN** option, Then Enter **Server IP** and **Gateway IP**. This is very important for BT-Pusher Device to connect to **BTManagerServer** software. if you only use LAN, **IP address** and **Server IP address** must be at same network segment (Server IP Address is

your PC IP address with BTManagerServer software installation), please refer to Illustration 3 (LAN).if you want to connect to internet, You need write your Gateway IP here,And Server ip is a internet IP address,Or you can enter Server Name directly,Please refer to Illustration 4 (WAN),And ask your network manager for more details.

2) Click "OK" then system config updated information will be saved

The screenshot shows the 'Update system config' dialog box with the following fields and settings:

- System parameter:**
  - Bluetooth Name: BT-Pusher
  - Scan Range: Near (slider)
  - Send interval: 10 sec.
  - All resend interval: 1000 min.
  - Rejected-resend interval: 500 min.
  - Max respond time: 30 sec.
  - Max connect count: 4
  - Max reject count: 4
  - Scan interval: 10 sec.
  - Max scan count: 50
  - Max flow count: 50
  - Set:  0:00 To 23:59:59 (Devices do not work in other time periods)
- Network type:**
  - Stand-Alone
  - LAN
  - CDMA
  - GRPS
  - WIFI
- Network parameter:**
  - NetPoint:
  - Account:  Password:
  - SSID:  Key:
  - Gateway IP: 192 . 168 . 1 . 1  Server Name:
  - Server IP: 192 . 168 . 1 . 107 Server port: 2323
- Update System Config
- Buttons: OK, Cancel

Annotations in the image:

- 1. select "LAN" (pointing to the LAN radio button)
- 2. Enter Gateway and server IP (pointing to the Gateway IP and Server IP fields)
- 3. Press OK. (pointing to the OK button)

Illustration 3 (LAN)

or

Update system config

System parameter:

Bluetooth Name: BT-Pusher Scan Range: Near Far

Send interval: 10 sec. All resend interval: 1000 min. Rejected-resend interval: 500 min.

Max respond time: 30 sec. Max connect count: 4 Max reject count: 4

Scan interval: 10 sec. Max scan count: 50 Max flow count: 50

Set system scan time zone: 0:00:00 To 23:59:59 (Devices do not work in other time periods)

Network type:

Stand-Alone  LAN  CDMA  GRPS  WIFI

Network parameter:

NetPoint: Telephone: Account: Password:

SSID: Key:

Gateway IP: 192 . 168 . 1 . 1  Server Name: bt-pusher.gicp.net

Server IP: 202 . 96 . 128 . 60 Server port: 2323

Update System Config

OK Cancel

Illustration 4 (WAN)

- 3) Back to main window, you can see "Update Config" were selected
- 4) If everything has been confirmed correct, press **Save Config** on the upper right corner.
- 5) Click "OK" in the pop-ups window of the "Save config done!"
- 6) Insert a USB device to the USB Port of your PC, then press **Copy to Flash disk**.
- 7) Select U-Disk you want to copy to in the pop-ups window, then click "OK"

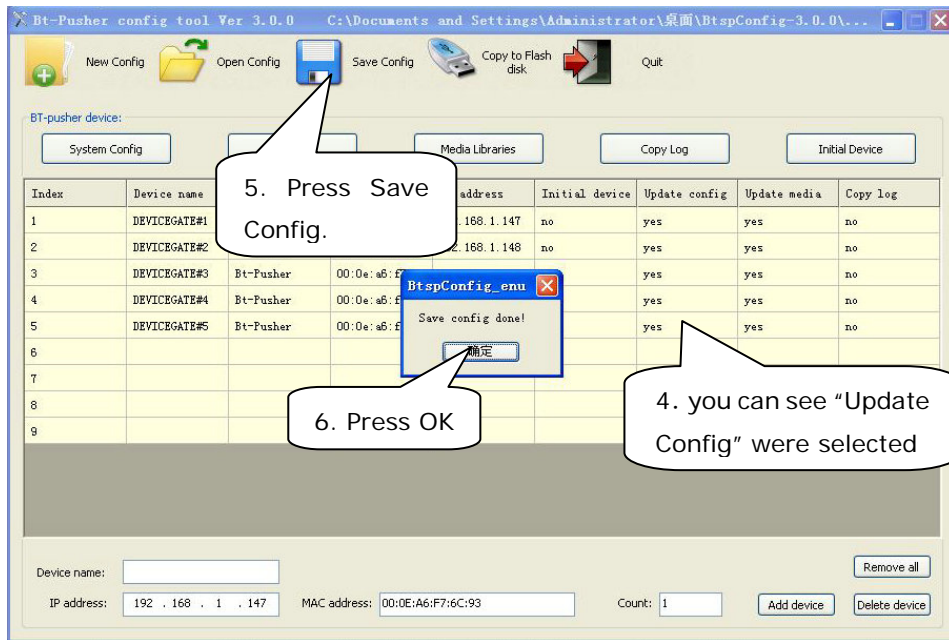


Illustration 4

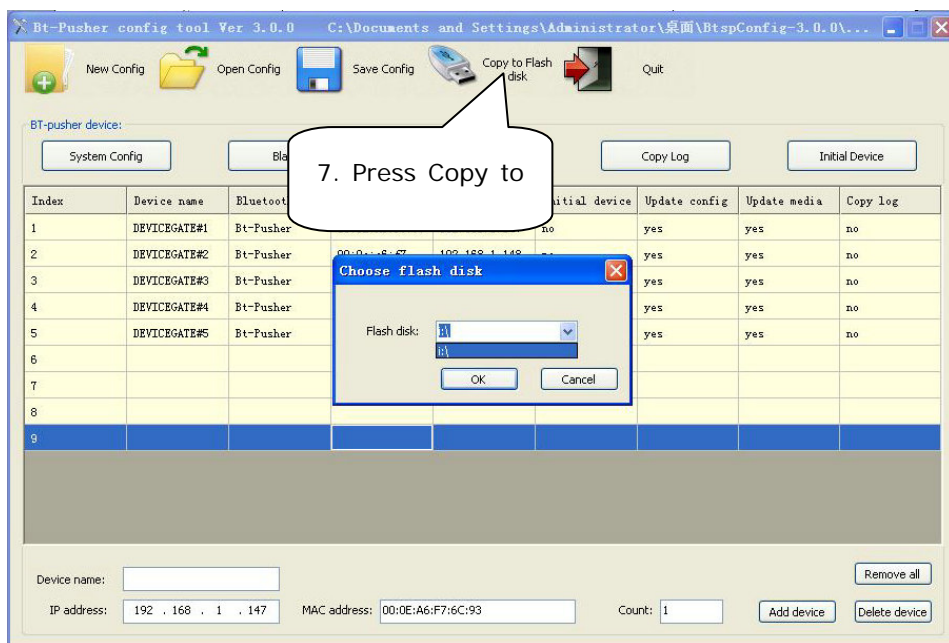


Illustration 5

7) If there is an old update file stored in this U-disk, you will see a dialog in Illustration 6 asking whether you would like to overwrite it.

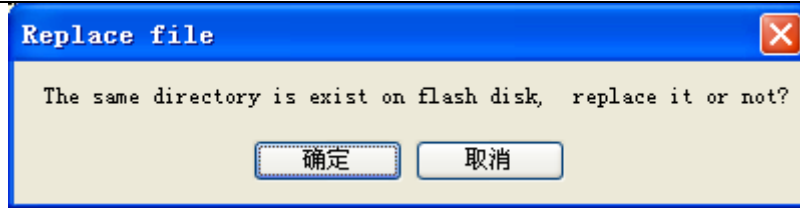


Illustration 6


- 8) Press **OK** to Continue.
- 9) A dialog will appear saying "**Copy to flash disk done!**"



Illustration 7

- 10) You can now remove the USB from your PC and insert it to the **BT-Pusher** USB port.
- 11) [BT-Pusher](#) device's Green light flashes once every half a second, indicates device being updated:

2: Connect BT-Pusher Device to **BTManagerServer** software

- 1) Double click the Local Connection icon  in your PC with BTManagerServer software installation, the Local Area Connection Status window will popup. (shown in Illustration 8).

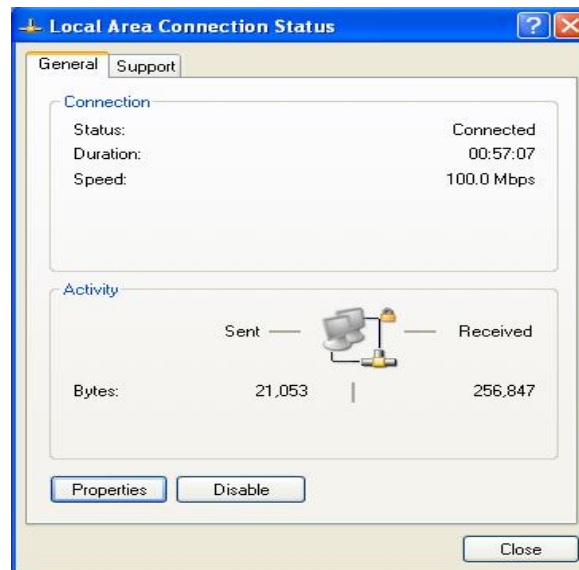


Illustration 8

- 2) On the Support tab, under Connection status, you will see your Network connection details, **Please make sure your IP address and Default Gateway is same as section 1 setup**(shown in Illustration 9).

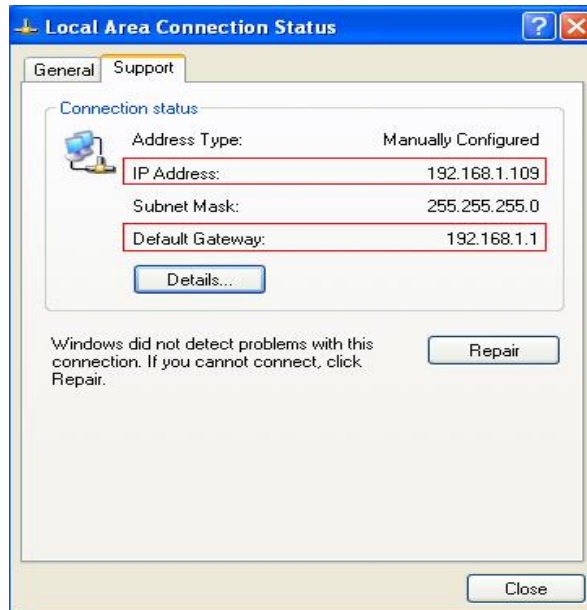


Illustration 9

- 3) Please connect your BT-Pusher Device to your network using a RJ45 cable. If you have a correct IP address in BT-Pusher Device, you can ping BT-Pusher Device in your PC, as "ping 192.168.1.147" in our examples, if you can not ping out, please make sure you have a correct IP setup, correct network cable connection, and BT-Pusher Device Power ON and Blue LED flash:

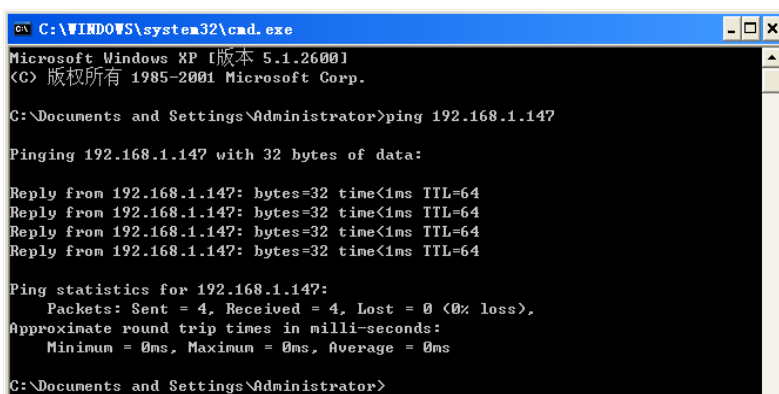


Illustration 10

- 4) Double-click to open **BtManagerServer.exe** software, and soon there is a device icon into a Green.

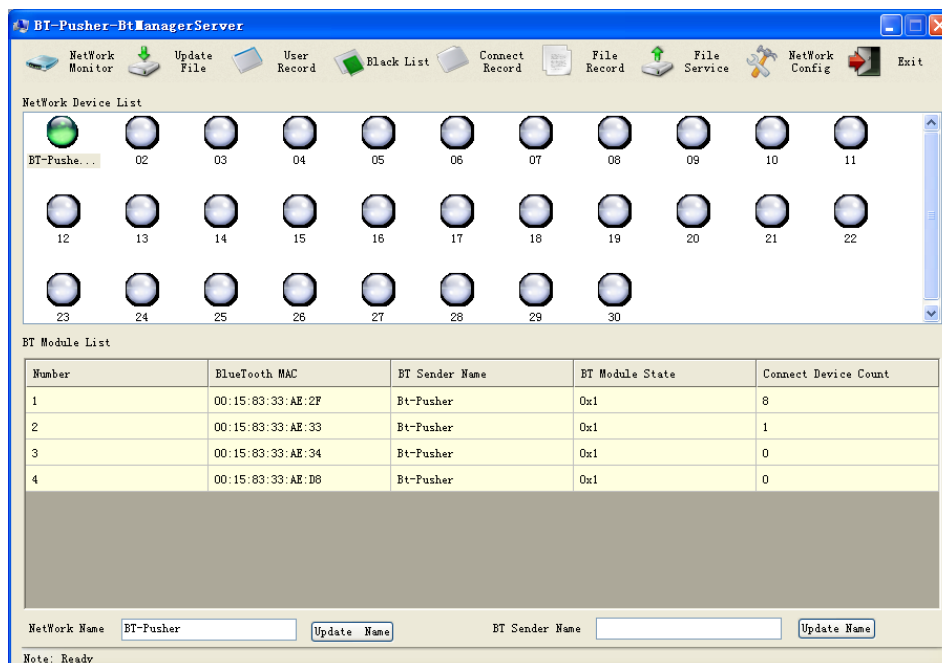


Illustration 11



**DeviceGate Technology Co.,Ltd**

**Web** <http://www.BT-Pusher.com>

**Mail** [BT-Pusher@DeviceGate.com](mailto:BT-Pusher@DeviceGate.com)

**Tel** 0086-20-82317785, 0086-20-82317786

**Fax** 0086-20-62201638