

How to Connect BT-Pusher Device to BTManagerServer Software for Management Remotely

1: Use **BtspConfig** software to setup correct network parameter for BT-Pusher Device.

- 1) Click on "New Config" button, the following window popup.
- 2) Enter Config name to create new project.
- 3) Click OK to return to main window. (shown in Illustration 1)

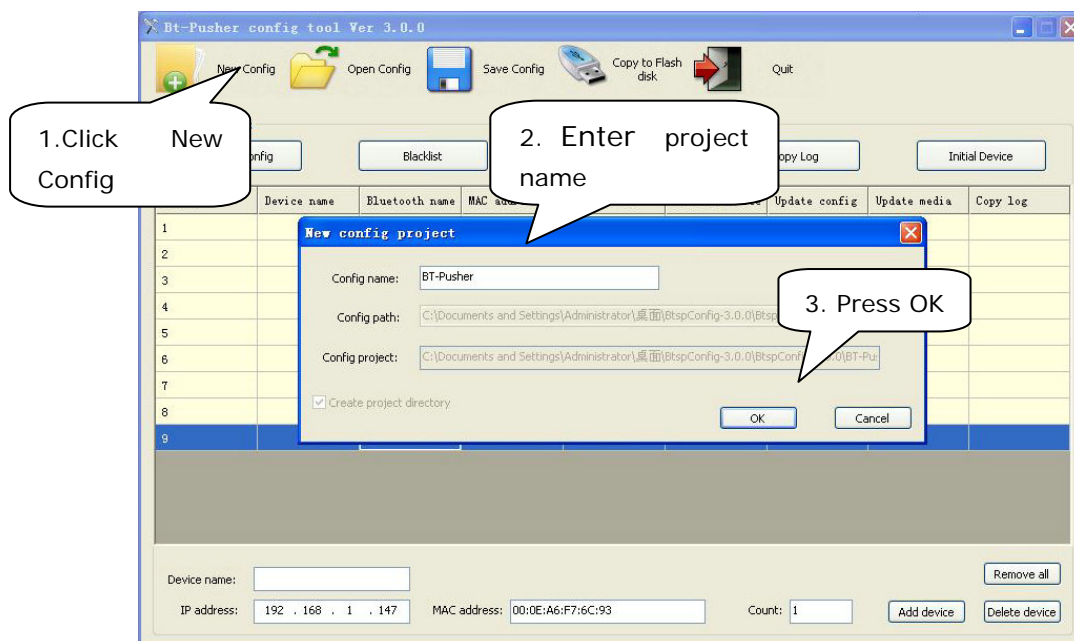


Illustration 1

- 4) Enter "Device name" in the below blank sheet
- 5) Enter the count of BT-Pusher devices you want to operate in the system
- 6) **Enter correct IP address range, This is important for you to connect BtmanagerServer software. Ip address and Server IP**

must be at same network segment in LAN, if you want to connect to internet, You need write correct gateway IP Address in System Config window, And Server IP is a internet IP address.

- 7) Click "Add Device". (shown in Illustration 2)
- 8) You will see a list of all devices

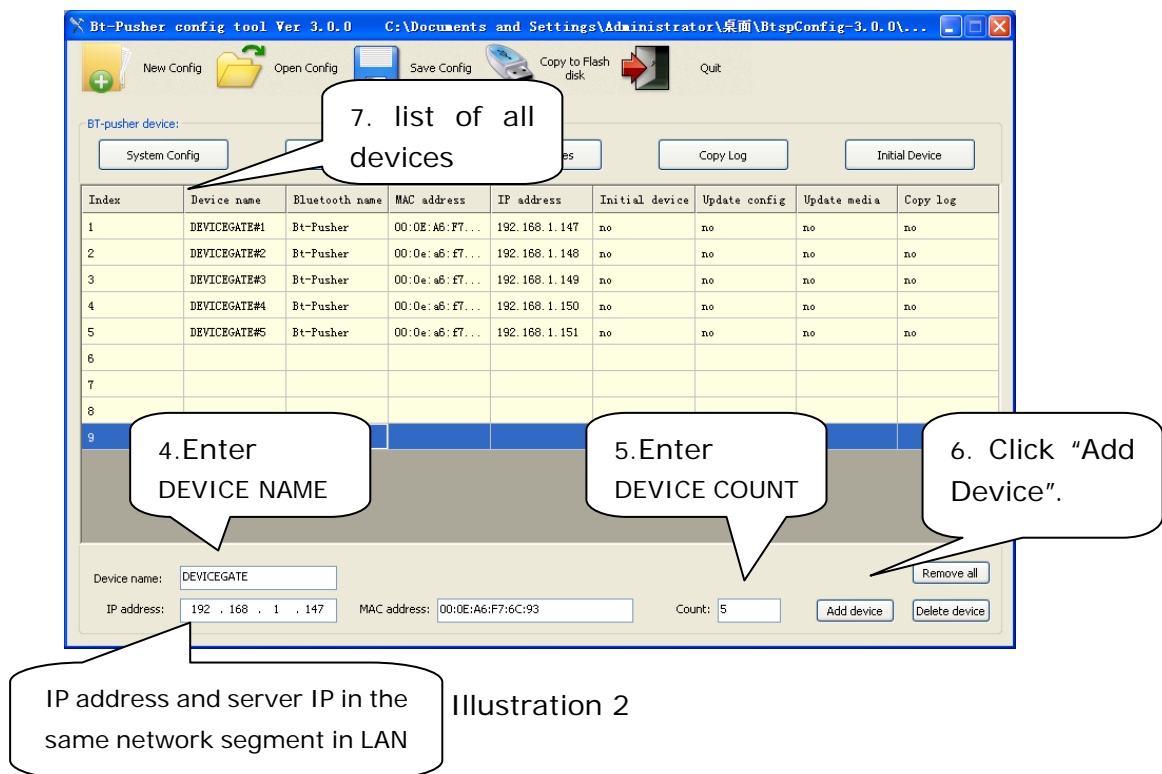
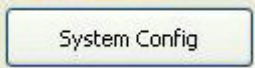


Illustration 2

And network version BT-Pusher device requires some other Network parameters setup.

- 1) Clicking System Config  button .Under Network Type, select LAN option, Then Enter Server IP and Gateway IP.This is very important for BT-Pusher Device to connect to BTManagerServer software.if you only use LAN, IP address and Server IP address must be at same network segment(Server IP

Address is your PC IP address with BTManagerServer software installation).if you want to connect to internet, You need write your Gateway IP here,And Server ip is a internet IP address.

Please ask your Network administrator for more detailed.

2) Click "OK" then system config updated information will be saved

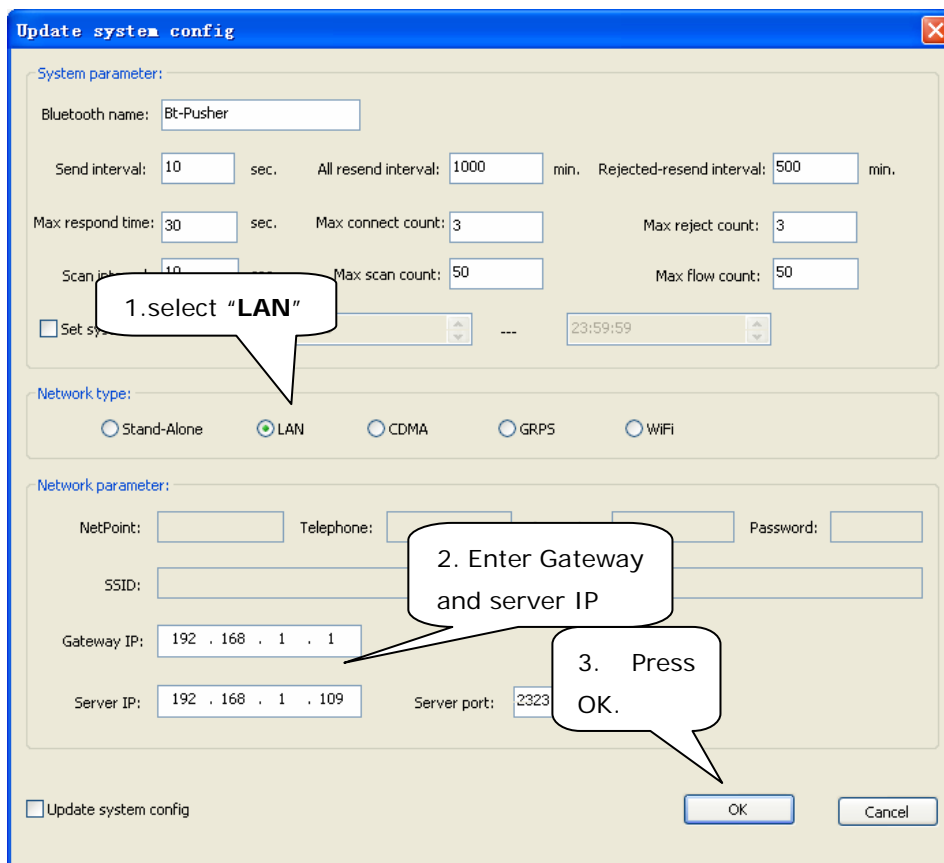


Illustration 3

- 3) Back to main window, you can see "Update Config" were selected
- 4) If everything has been confirmed correct, press **Save Config** on the upper right corner.
- 5) Click "OK" in the pop-ups window of the "Save config done!"
- 6) Insert a USB device to the USB Port of your PC, then press **Copy to Flash disk.**

7) Select U-Disk you want to copy to in the pop-ups window, then click "OK"

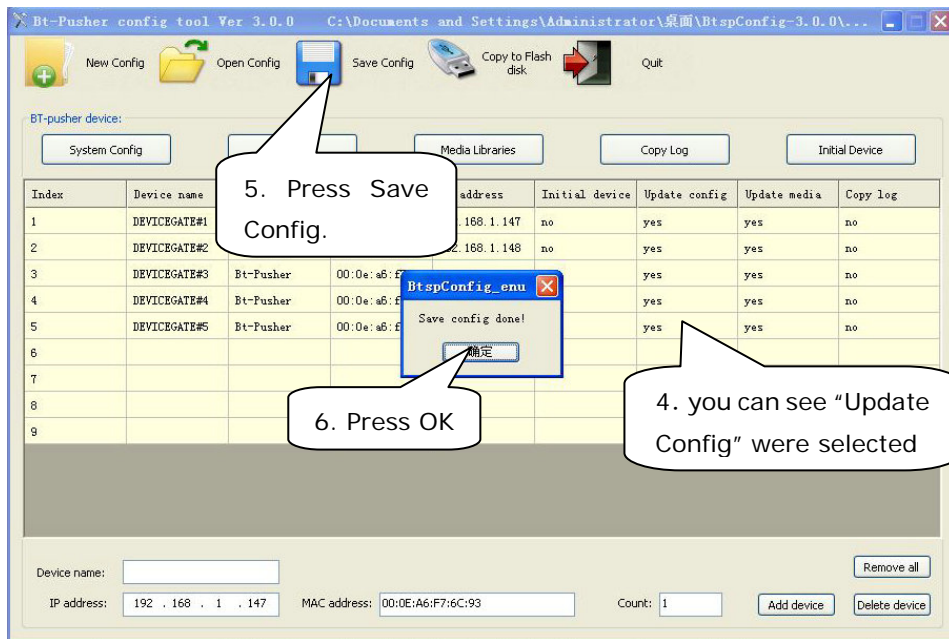


Illustration 4

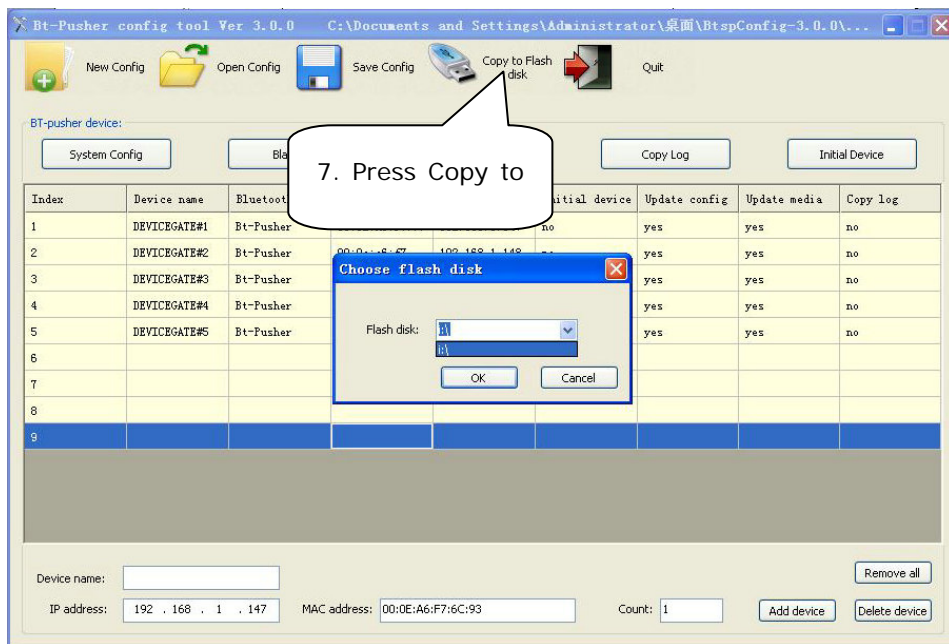


Illustration 5

7) If there is an old update file stored in this U-disk, you will see a dialog in Illustration 6 asking whether you would like to overwrite it.

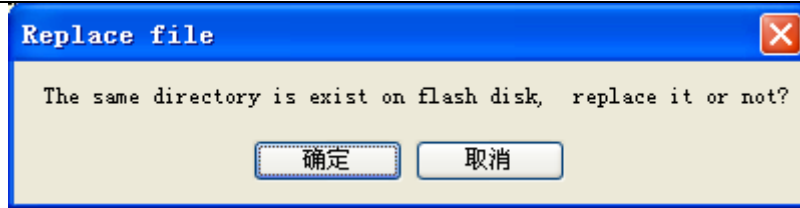


Illustration 6


- 8) Press **OK** to Continue.
- 9) A dialog will appear saying "**Copy to flash disk done!**"



Illustration 7

- 10) You can now remove the USB from your PC and insert it to the **BT-Pusher** USB port.
- 11) [BT-Pusher](#) device's Green light flashes once every half a second, indicates device being updated:

2: Connect BT-Pusher Device to **BtManagerServer** software

- 1) Double click the Local Connection icon  in your PC with BTManagerServer software installation, the Local Area Connection Status window will popup. (shown in Illustration 8).

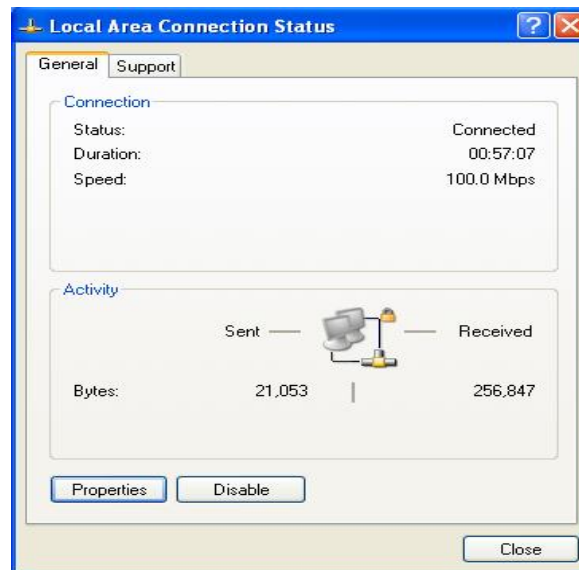


Illustration 8

- 2) On the Support tab, under Connection status, you will see your Network connection details, **Please make sure your IP address and Default Gateway is same as section 1 setup**(shown in Illustration 9).

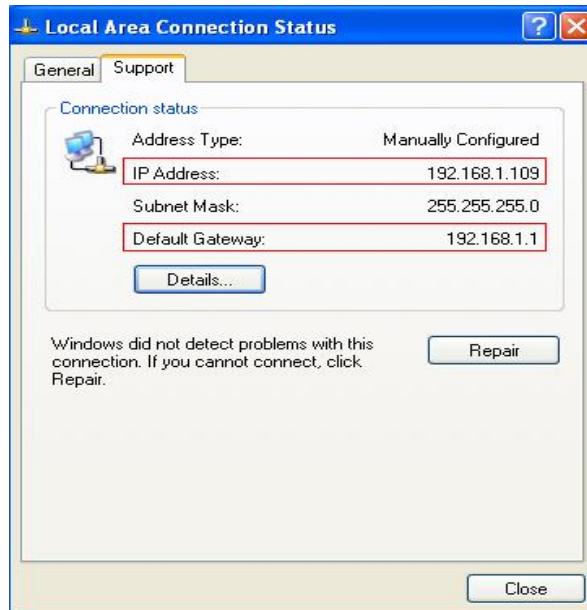


Illustration 9

- 3) Please connect your BT-Pusher Device to your network using a RJ45 cable. If you have a correct IP address in BT-Pusher Device, you can ping BT-Pusher Device in your PC, as "ping 192.168.1.147" in our examples, if you can not ping out, please make sure you have a correct IP setup, correct network cable connection, and BT-Pusher Device Power ON and Blue LED flash:

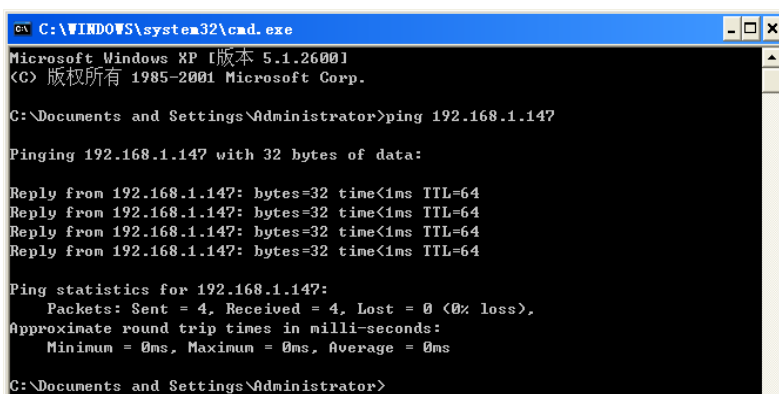


Illustration 10

- 4) Double-click to open **BtManagerServer.exe** software, and soon there is a device icon into a Green.

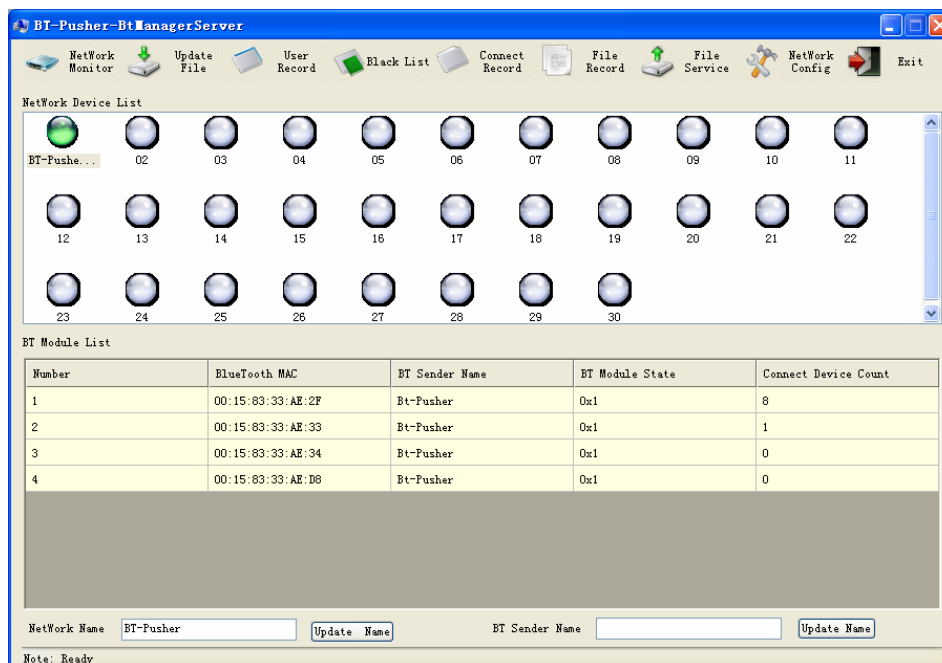


Illustration 11



DeviceGate Technology Co.,Ltd

Web <http://www.bt-pusher.com/en>

Mail bt-pusher@devicegate.com devicegate@gmail.com

Tel 0086-20-82317785, 0086-20-82317786

Fax 0086-20-62201638